

LUXEMBOURG'S INDUSTRIAL

— LANDSCAPE —

Today, Luxembourg's industrial sector consists of 771 companies employing more than 34,000 people (7.3% of total employment in Luxembourg), and generating a turnover of EUR 14.5 billion (5.7% of the GDP).

2020

In 2018, Luxembourg sets up a space agency to define and implement the country's strategy in this sector.

2010

In 2015, the Ministry of the Economy launches a major strategic study entitled 'The Third Industrial Revolution'.

2000

In 2000, the industrial sector accounts for 12.9% of domestic employment.

1990

In 1985, the establishment of the satellite company SES in Betzdorf launches Luxembourg into a new era that prefigures the country's future ambitions in space.

1980

In 1975, the global steel crisis hits Luxembourg hard.

1970

In 1970, the industrial sector accounts for 44% of Luxembourg's GDP.

1960

From the 1960s onwards, industrial diversification accelerates with the emergence of companies specialising in various products for industrial usage (logistics equipment, fibres and composite materials, tools, machinery and equipment) or mass consumption (household and cleaning products, etc.).

1950

In 1949, Goodyear is the first major American company to set up in Luxembourg.

1940

After 1945, the second industrial revolution begins in Luxembourg. Sectors linked to the automobile, chemical and electricity industries experience robust growth.

1930

Luxembourg experiences a surge in companies supplying the construction sector.

1920

In 1926, the Franco-German international steel accord, *Entente Internationale de l'Acier* (EIA), is formed.

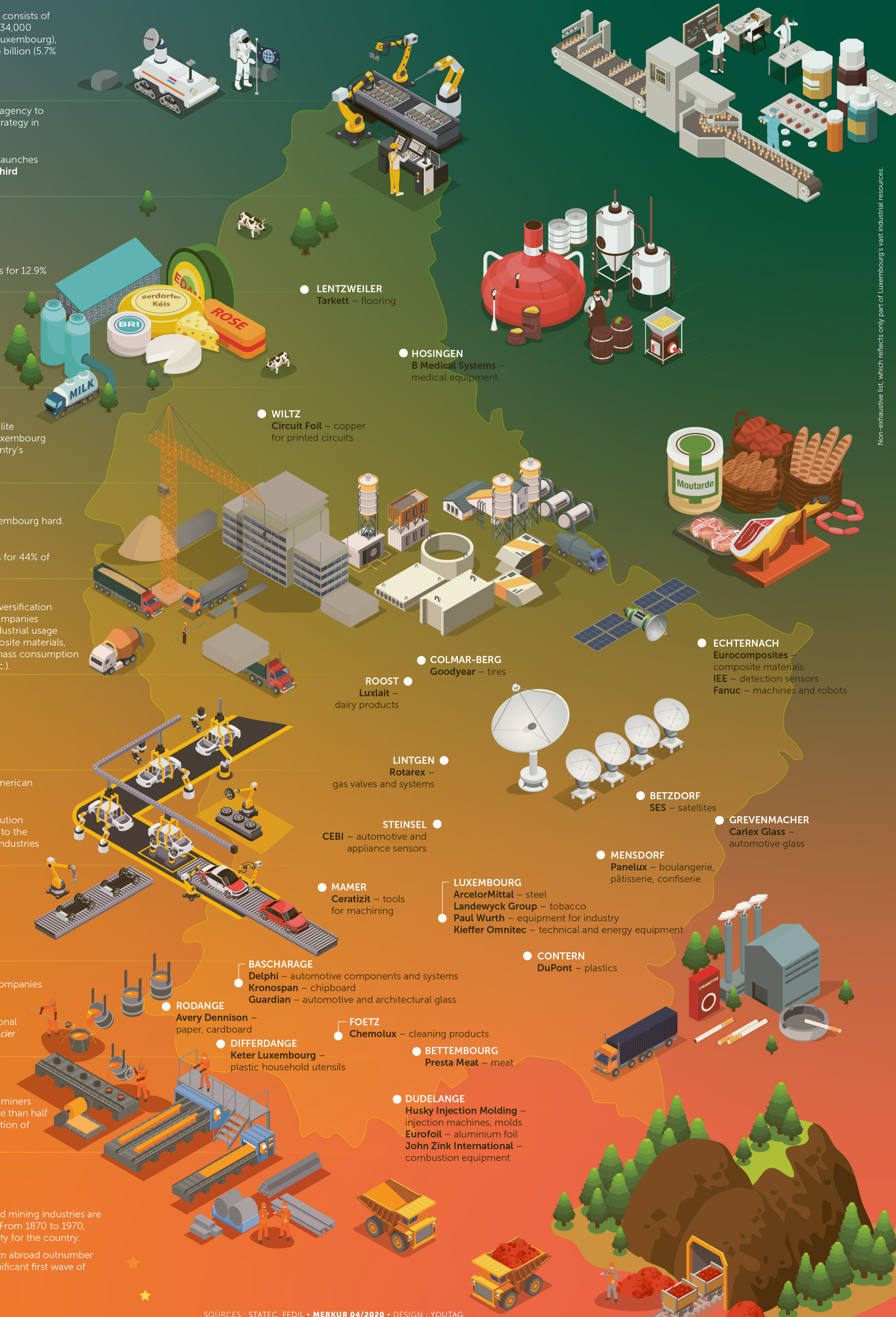
1910

In 1913, the country has some 19,000 miners and steelworkers. They represent more than half of the labour and craftsperson population of Luxembourg.

before 1900

First industrial revolution. The steel and mining industries are established in southern Luxembourg. From 1870 to 1970, they are a principal source of prosperity for the country.

From 1899 onwards, steelworkers from abroad outnumber Luxembourg workers, following a significant first wave of migration.



Non-exhaustive list, which reflects only part of Luxembourg's vast industrial resources.