

# Luxembourg Chamber of Commerce

Jeannot Erpelding, Director, International Affairs

Mwaramutse !  
Gudde Moien !  
Bonjour !  
Good Morning !

# Luxembourg Chamber of Commerce



**90.000**  
affiliated members



**75%**  
of total  
employment



**80%**  
of the GDP

1. Involved in the legislative procedure by the preparation of opinions
2. Promote the entrepreneurial spirit and supporting the creation and development of businesses
3. Promote international foreign economic and trade relations
4. Promote education and training
5. Generate debates as an independent entity representing the economy and businesses

# Luxembourg / Rwanda – Our partnerships



**HEALTH**  
**LUX DEVELOPMENT**  
NATIONAL REFERENCE LABORATORY  
INFRASTRUCTURE  
KIGALI TODAY  
**RWANDA**  
FOOTBALL  
SCHOOL OF NURSING  
RTL GROUP  
MINISTRY OF HEALTH  
RADIO TRANSMISSION  
**LUXEMBOURG**  
BROADCASTING CENTER EUROPE  
**BCE** **RWAMAGANA**  
ECOLE DES SCIENCES INFIRMIÈRES



# And in football too...



Abakinnyi b'Amavubi (Ifoto/Ububiko)



Nirisarike Salomon yakoreshejwe na Enzen imyitozo yihariye nyuma y'urugendo rwo kuva mu Bubiligi

# Luxembourg / Rwanda – A few comparative facts & numbers



614.000

2.586 km<sup>2</sup>

3,5% (2018)

LUXEMBOURGISH, FRENCH, GERMAN,  
(ENGLISH WIDELY SPOKEN)

LUXEMBOURG – CITY :  
CLEANEST CITY IN EUROPE

POPULATION

AREA

REAL GROWTH RATE

OFFICIAL  
LANGUAGE(S)

COMMON GROUNDS



12.7 million

26.338 km<sup>2</sup>

8,6% (2018)

KINYARWANDA, ENGLISH, FRENCH,  
SWAHILI

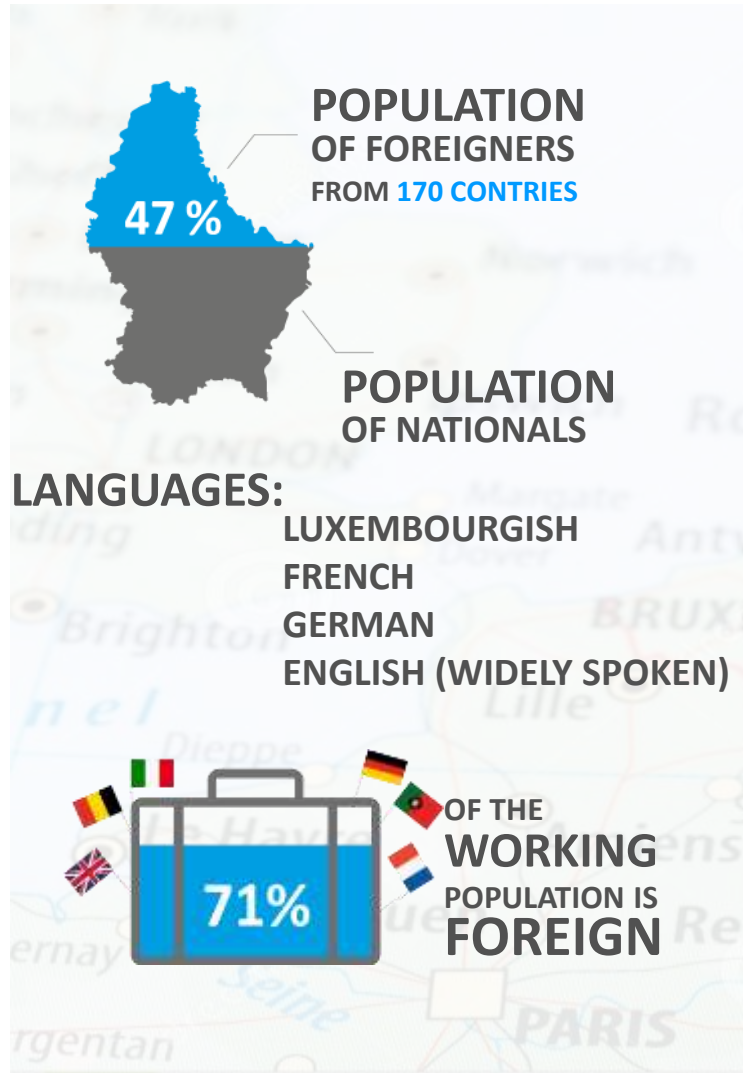
KIGALI : CLEANEST CITY IN AFRICA

# The Grand-Duchy of Luxembourg

Open  
Dynamic  
Reliable

**OPEN**

# MULTICULTURAL AND MULTILINGUAL





# MULTICULTURAL AND MULTILINGUAL



LUXEMBOURG RANKS  
**10<sup>TH</sup>** IN ATTRACTING  
INNOVATIVE  
TALENT

# OPEN ECONOMY

## LUXEMBOURG RANKS

3

BEHIND SINGAPORE  
AND HONG KONG  
(ICC OPEN MARKETS  
INDEX 2017)



LUXEMBOURG  
EXPORTS OVER

65%

OF ITS GOODS  
AND SERVICES



# EUROPEAN LOGISTICS HUB



The infographic on the left features a blue map of Europe with a white airplane icon, a globe icon, and a truck icon. The text is presented in a clean, sans-serif font with blue and white colors. The photograph on the right shows a large yellow cargo loader with a circular metal structure, set against a bright sky with clouds and a sun flare.

**75**  
DESTINATIONS  
SERVED BY  
LUXEMBOURG  
AIRPORT

✓  
LUXAIR CARGO  
WITHIN  
**12 HOURS**  
TRAVELTIME OF  
**70%**  
OF THE  
EUROPEAN  
ECONOMIC  
ACTIVITY

# PRO-EUROPEAN / EUROPEAN REGULATORY EXPERTISE

**LUXEMBOURG**  
IS ONE OF CAPITALS  
OF THE EUROPEAN  
UNION



EUROPEAN INSTITUTIONS  
**12** ARE HEADQUARTERED  
IN LUXEMBOURG



**DYNAMIC**

# INNOVATIVE INDUSTRY



THE STEEL INDUSTRY EXISTS  
IN LUXEMBOURG SINCE 1870

ARCELOR MITTAL  
IS THE SECOND LARGEST  
PRIVATE EMPLOYER  
WITH



**4,160**  
EMPLOYEES

**13,4%**  
of GDP



ArcelorMittal

# INNOVATIVE INDUSTRY

## MAIN INDUSTRIAL PROJECTS ANNOUNCED



# RESEARCH AND DEVELOPMENT



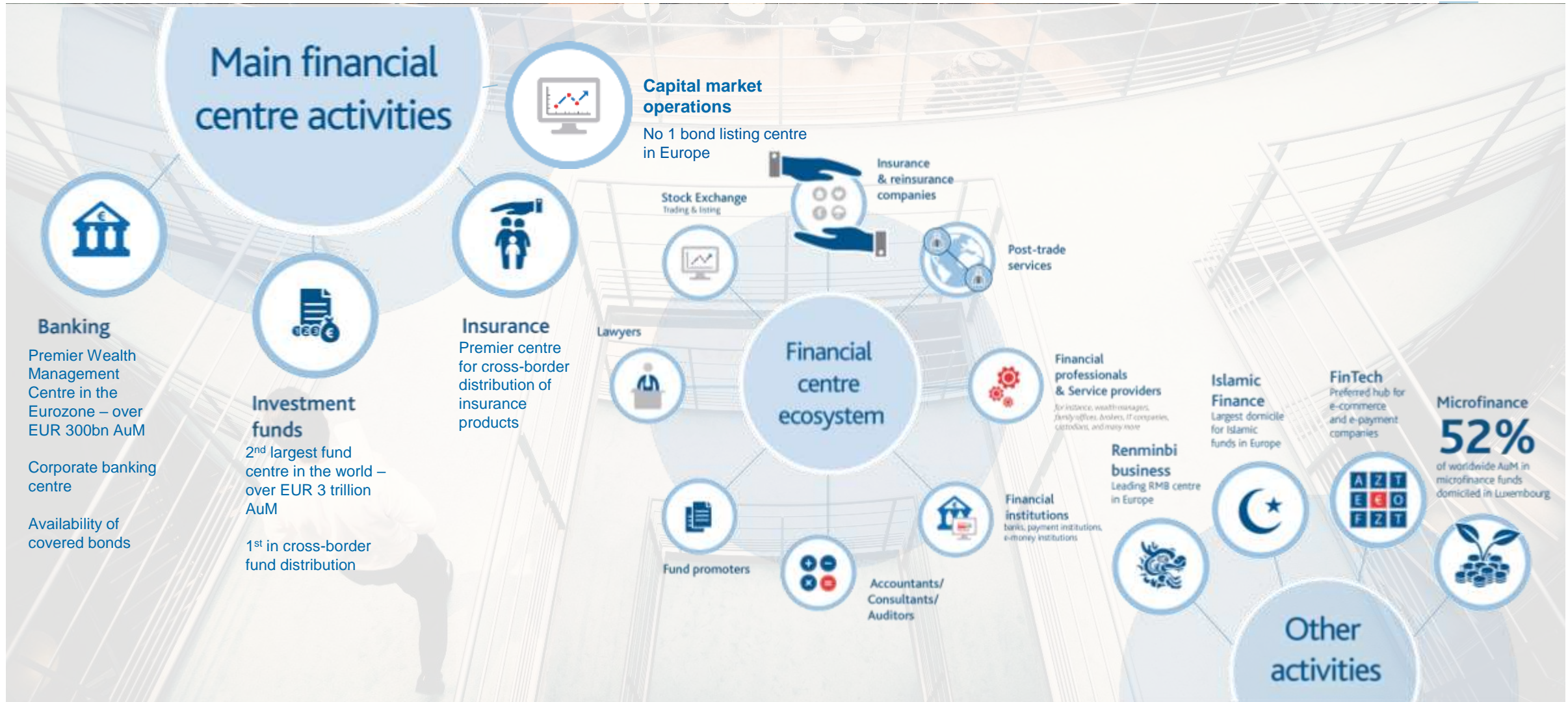
**3.000**  
RESEARCHERS



PUBLIC EXPENSES FOR R&D  
INCREASED TENFOLD  
**SINCE 2000**



# INTERNATIONAL FINANCIAL EXPERTISE



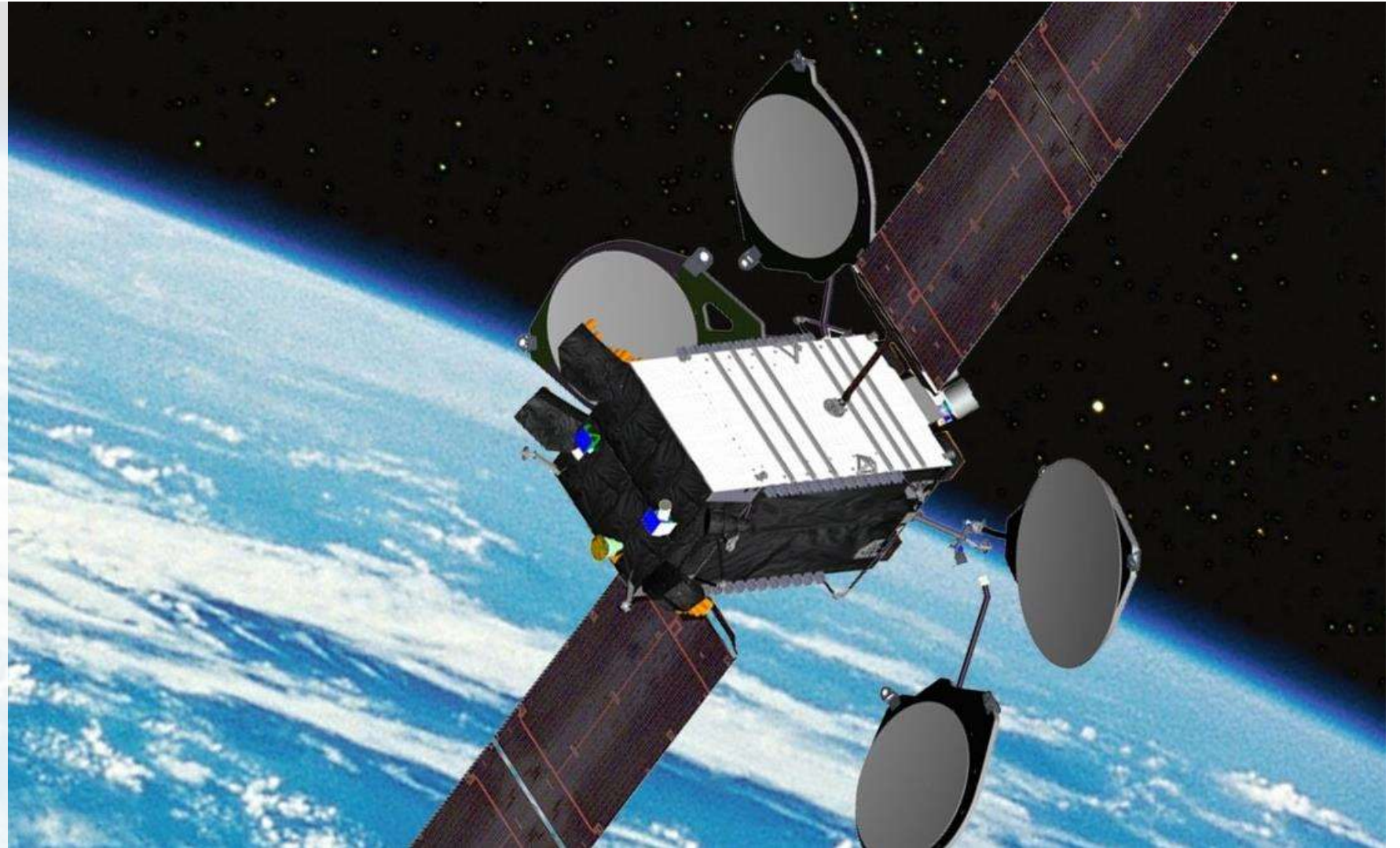
# SPATIAL TECHNOLOGY / SATELLITES

“L’INNOVATION OU  
L’ART D’ANTICIPER”

**SES**▲

**RTL**”  
GROUP

**bce**)))  
broadcasting center europe




# ICT / DATACENTERS / DIGITALISATION

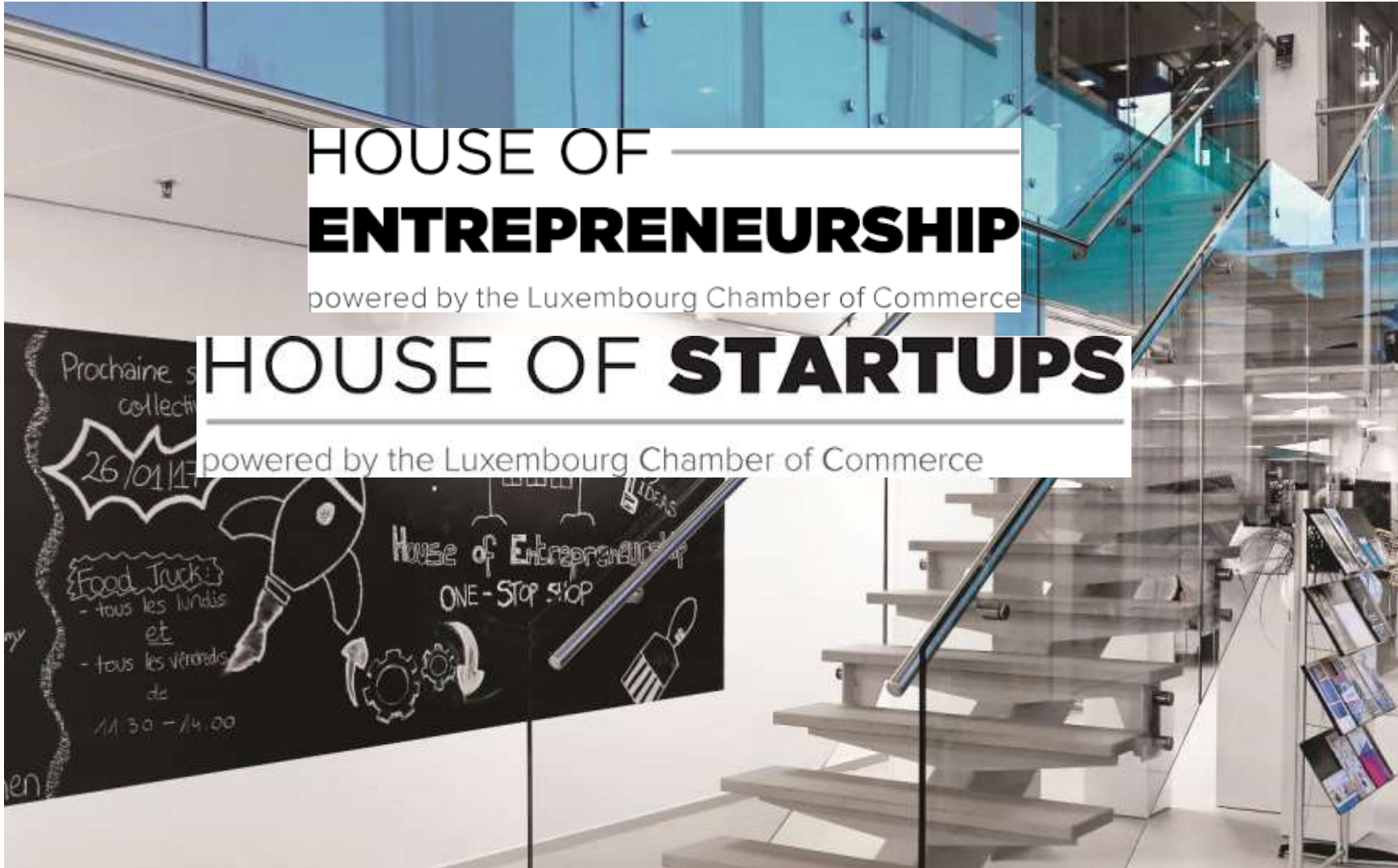


**23**  
 **DATACENTERS**

**8**<sup>ARE</sup> **TIER IV**  
**CERTIFIED**

 **23** **FIBER**  
**ROUTES**  
CONNECT LUXEMBOURG  
TO THE REST OF EUROPE

# A START-UP AND SME FRIENDLY COUNTRY



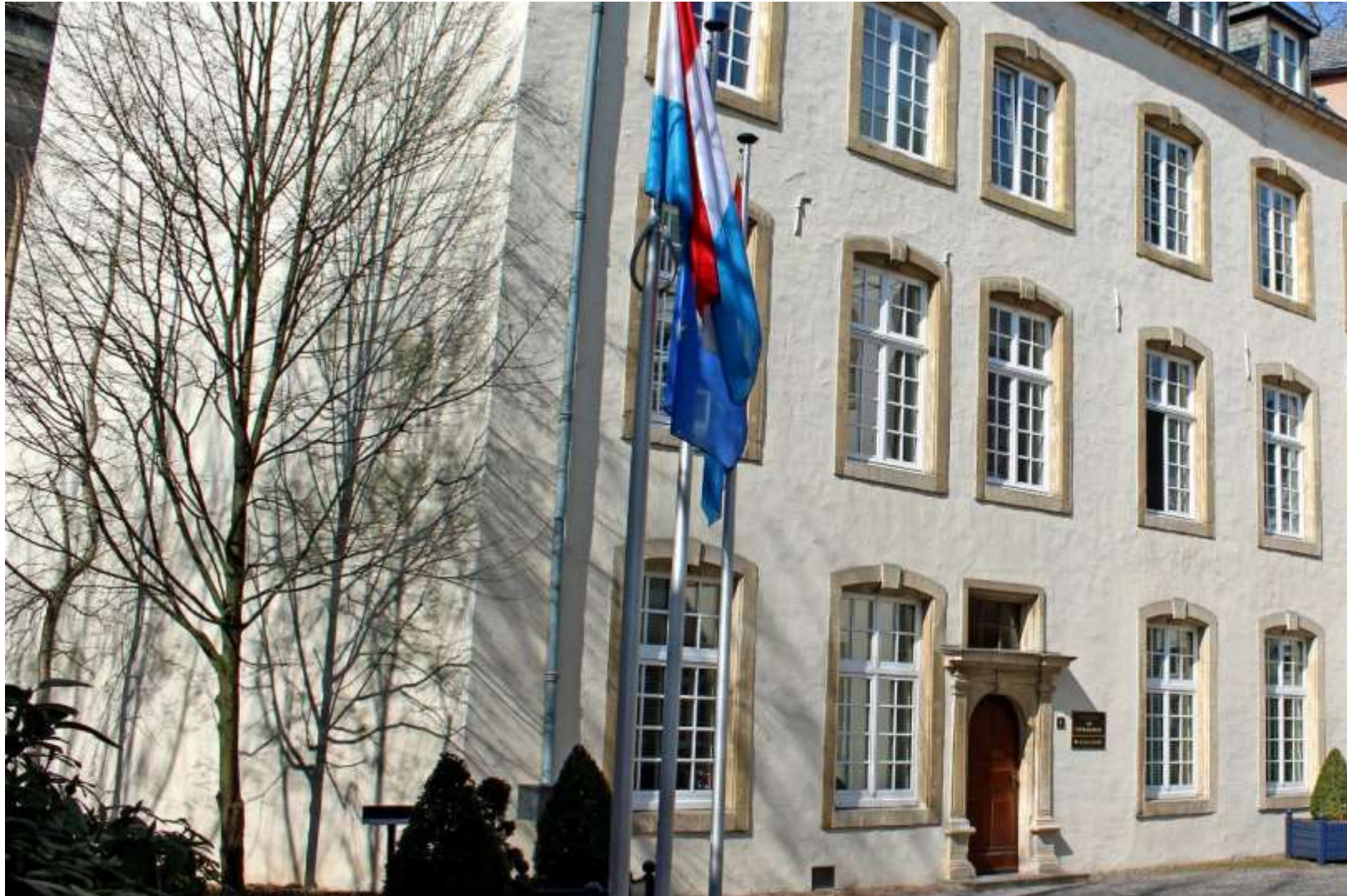
**663**

**PROJECTS  
ASSISTED**

**BY THE MINISTRY OF  
ECONOMY  
BETWEEN 2009 AND 2015**

**RELIABLE**

# POLITICALLY STABLE AND NEUTRAL



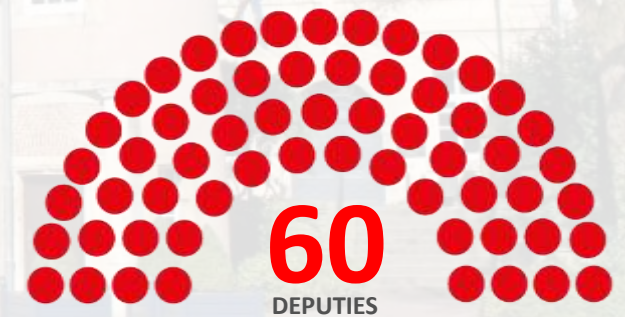
ONLY  
**8**

**PRIME  
MINISTERS  
SINCE 1945**



**VOTING  
RIGHTS  
FOR  
FOREIGNERS**

THE CHAMBER OF DEPUTIES (2017)



# LABOUR LAW AND SOCIAL DIALOGUE



ONLY  
**4,1**  
LOST  
WORKING DAYS  
(FOR 1.000 EMPLOYED PERSONS)



DUE TO  
STRIKES BETWEEN  
**2005-2009**  
(AVERAGE EU : 30,6)

# QUALITY OF LIFE AND SAFETY



**LUXEMBOURG IS THE SAFEST  
CITY IN THE WORLD**  
MERCER QUALITY OF LIVING REPORT 2016

**WHAT DO RESIDENTS OF  
LUXEMBOURG CITY SAY?**  
EUROBAROMETER 2015

**96%**  
ARE SATISFIED  
LIVING IN  
LUXEMBOURG

**95%**  
ARE SATISFIED  
WITH THE STATE  
OF CLEANLINESS

**86%**  
FEEL SAFE





# OUR DELEGATION



THE GOVERNMENT  
OF THE GRAND DUCHY OF LUXEMBOURG



## LUXEMBOURG'S MINISTRY OF FOREIGN AND EUROPEAN AFFAIRS

Mr. Thomas BARBANCEY, Director of African Affairs, Ministry of Foreign and European Affairs

## LUXEMBOURG CHAMBER OF COMMERCE

Jeannot ERPELDING, Director, International Affairs

Thomas BERTRAND, Attaché, International Affairs, Sub-Saharan Africa

# LUXAFRICA INVESTMENTS ASSOCIATION



Mr. Bertrand  
MOUPFOUMA  
Co-Founder



Mr. Mazowe  
BINGALA  
Vice-President



AWTOL



Mr. Denis LEMAIRE

CEO



Another Way To Organise your Life

**CONSULTING**

AWTOL was asked by the Luxembourg House of Training, to launch a new Banking Academy for the East African Region, in Kigali.

# BROADCASTING CENTER EUROPE



Mr. Eugène Muller  
Head of Technical  
Services &  
Transmission



Mr. Vincent Demarque  
Project Engineer



## CONSULTING

BCE is a European leader in media services, system integration and software development for television, radio, production, postproduction, and ICT.

**BOSON ENERGY**



**Mr. Heike Carl Zatterstrom**  
**CCO**

**BOSON ENERGY**

**THE IMBY COMPANY**

**WASTE-TO-ENERGY TECHNOLOGY**

**BOSON ENERGY** has developed the first sustainable solutions for a wide range of mixed municipal, commercial and hazardous wastes that are financially, environmentally and operationally viable over full lifecycle.

KOOSMIK



Mr. Grégoire YAKAN  
CEO



## FINTECH

Koosmik provides financial services through a mobile banking application to the young and more generally young or unbanked population in Africa

# LUXEMBOURG SCHOOL OF BUSINESS



Mr. Marin NJAVRO  
Managing Director

## EDUCATION

The LSB is an accredited graduate business school in Luxembourg created in 2014 to provide, promote and advance top quality high-level international business education.



# ONOMO INTERNATIONAL



Mr. Souleymane KHOL  
COO

## HOSPITALITY

Today, ONOMO Hotels is present in Dakar, Abidjan, Libreville, Bamako, Lomé, Cape Town, Sandton, Durban, Conakry, **Kigali**, Rabat and Casablanca.

# SIMON & CHRISTIANSEN



Mr. Thomas LECLERC  
Deputy Manager



## ENGINEERING

Simon Christiansen is a group of several engineering consulting firms responding to market requirements in the fields related to construction projects and planning.

STEELSHEDSOLUTIONS.COM



Mr. Dominique LYONNET  
CEO



## STEEL KIT BUILDINGS

**Steel Shed Solutions** specializes in the design and online sale of metal buildings kit, ready to build at the best value for money. They sell functional buildings, easy to assemble and low cost.

SURICATE SOLUTIONS



Mr. Jean-Louis Perrier  
Associate



**Suricate Solutions**  
Security & Payments

## CYBERSECURITY

Suricate Solutions is specialized in  
cybersecurity in Africa.

SUSTAIN



Mr. Pol Goetzinger  
CEO



**RENEWABLE ENERGY / SMART CITIES**  
Leading consultancy firm in Smart City  
Technologies, development of  
Renewable Energy, and Smart Mobility.

THEMIS LEX



Mr. Bertrand MOUPFOUMA

Associate

THEMIS | LEX

**LAW FIRM**

Themis Lex is a law firm specialized in  
multi-sectorial business law.

TRACTEL



Mr. Cédric TAHIR  
Sales Manager Africa



## MANUFACTURING EQUIPMENT

Development, manufacturing and distribution of Lifting, Handling, Access and Personal Protective Equipment.

# UPTION



Mr. Dominique  
DELARCHE



Mrs. Ange-Laure  
BOURGETEAU



Mr. Vincent  
<sup>40</sup>  
BOURGETEAU



Mrs. Frédérique  
DELARCHE

# UPTION

INNOVATIVE NATURAL CONCEPTS

---

## NATURAL COSMETICS

Uption is a R&D laboratory dedicated to the development of assets based on Green Chemistry. They promote an ecological, handmade and creative vision of natural cosmetics.



**THANK YOU**

