

Chamber of Commerce Luxembourg

**The Grand Duchy of Luxembourg:
A Centre of Economic Excellence!**

by Mr Jeannot ERPELDING, Director International Affairs

GIN DOBRY

HALLO




Who we are

Who we are

What we do

We partner up

Why Luxembourg?



The Chamber of Commerce :

a key actor of the Luxembourg economy since 1841

Our mission statement



- 1.** Involvement in the **legislative procedure** by the preparation of opinions
- 2.** **Promoting the entrepreneurial spirit** and supporting the creation and development of businesses
- 3.** Promoting **international** foreign economic and trading **relations**
- 4.** **Promoting education and a training** adapted to the strategic challenges faced by our country and its companies
- 5.** **Providing services** to business and the general public
- 6.** **Informing the public and stimulating debate** as a partner and independant voice representing the economy and businesses

Key figures



90.000
member companies



75%
of total
employment



Why Luxembourg?

Who we are

What we do

We partner up

Why Luxembourg?

OPEN

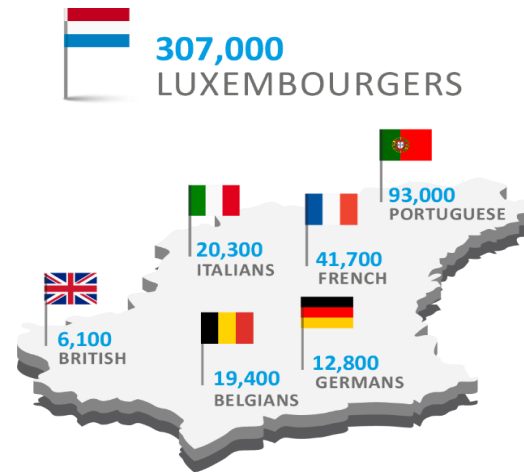
THE GRAND DUCHY OF LUXEMBOURG:

GLOBAL FROM DAY ONE - MULTILINGUAL



An international business-friendly environment for businesses...

- Political and socio-economic stability (« triple A »)
- State-of-the-art public infrastructures
- A multilingual and skilled population
- High factor productivity
- Attractive fiscal environment



DID YOU KNOW?

RESIDENTS SPEAK



LANGUAGES EACH (EUROBAROMETER)



LUXEMBOURG RANKS

10TH IN ATTRACTING
INNOVATIVE
TALENT

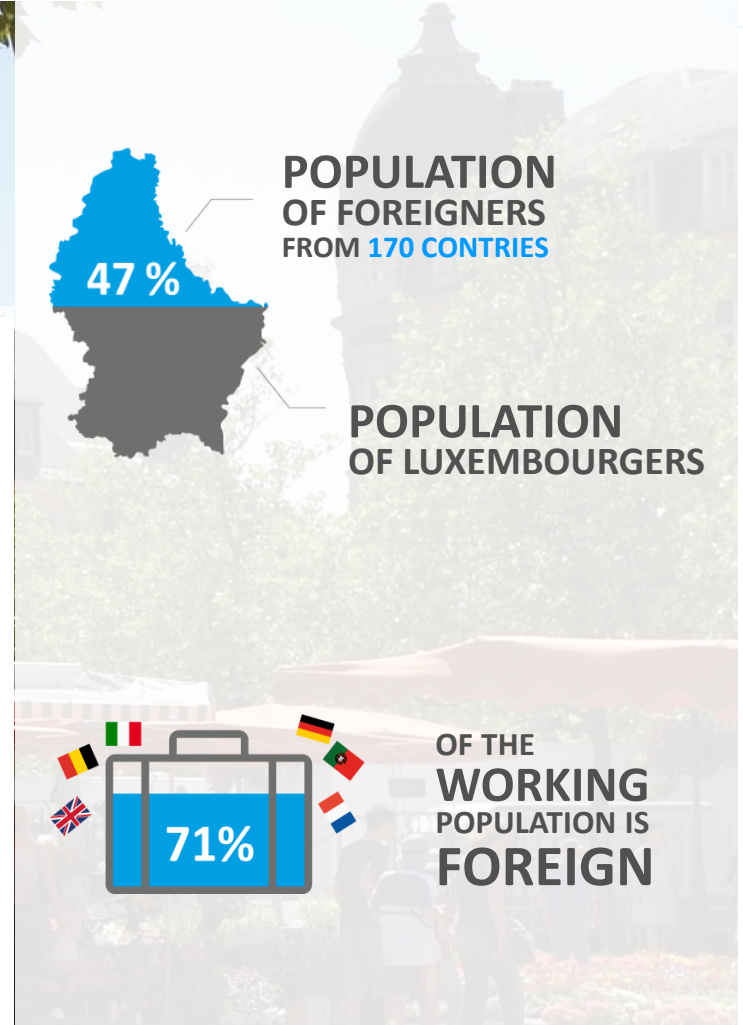
THE GRAND DUCHY OF LUXEMBOURG:

GLOBAL FROM DAY ONE – MULTICULTURAL



... but not only:

- Very open and yet safe country
- High quality of life and high purchasing power
- Strategic location in Europe and key actor in the EU integrations process
- Melting pot of cultures and nationalities
- Social dialogue within a dedicated institutional framework
- Model of socio-economic integration of foreign citizens



PRO-EUROPEAN / A TRUE EUROPEAN LABORATORY (1)



LUXEMBOURG
IS ONE OF CAPITALS
OF THE EUROPEAN
UNION



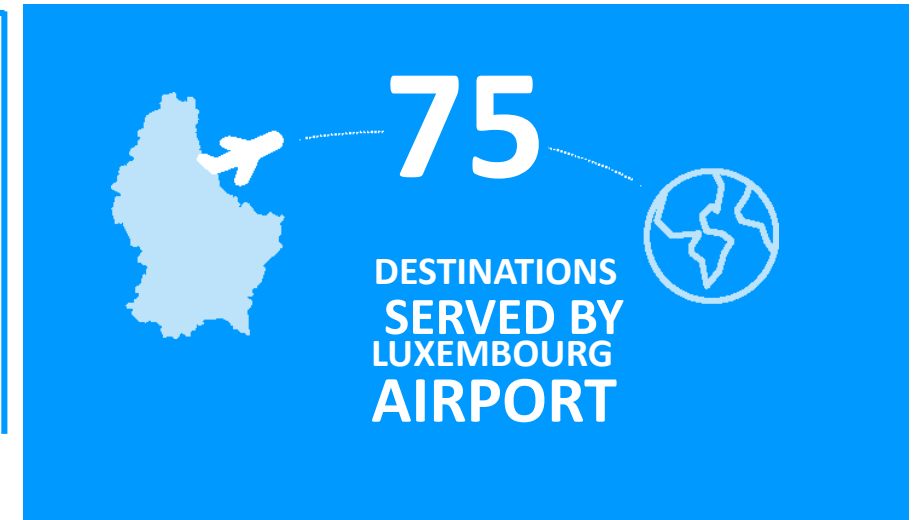
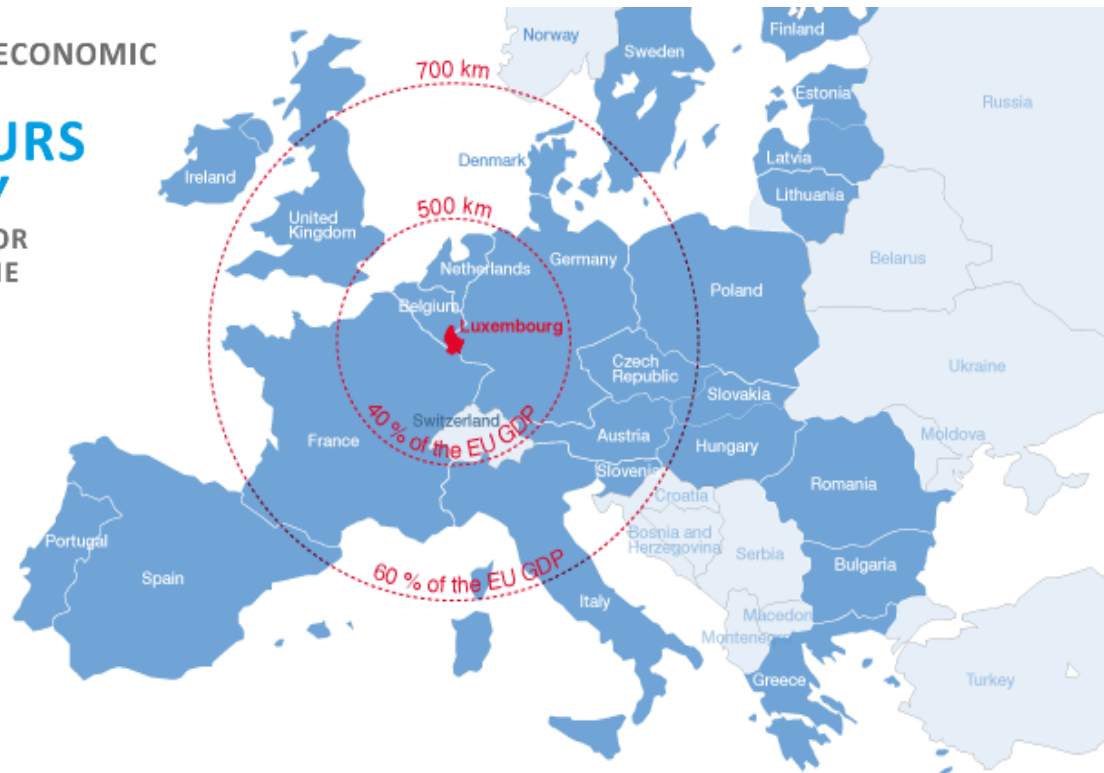
EUROPEAN INSTITUTIONS
12 ARE HEADQUARTERED
IN LUXEMBOURG

PRO-EUROPEAN / A TRUE EUROPEAN LABORATORY (2)

DID YOU KNOW?



SEVERAL ECONOMIC CENTRES
2 HOURS AWAY
BY TRAIN OR AEROPLANE



Some 40% of the EU's GDP is concentrated within a 500 km radius of Luxembourg.

Extended to 700 km, this percentage rate even reaches 70%.

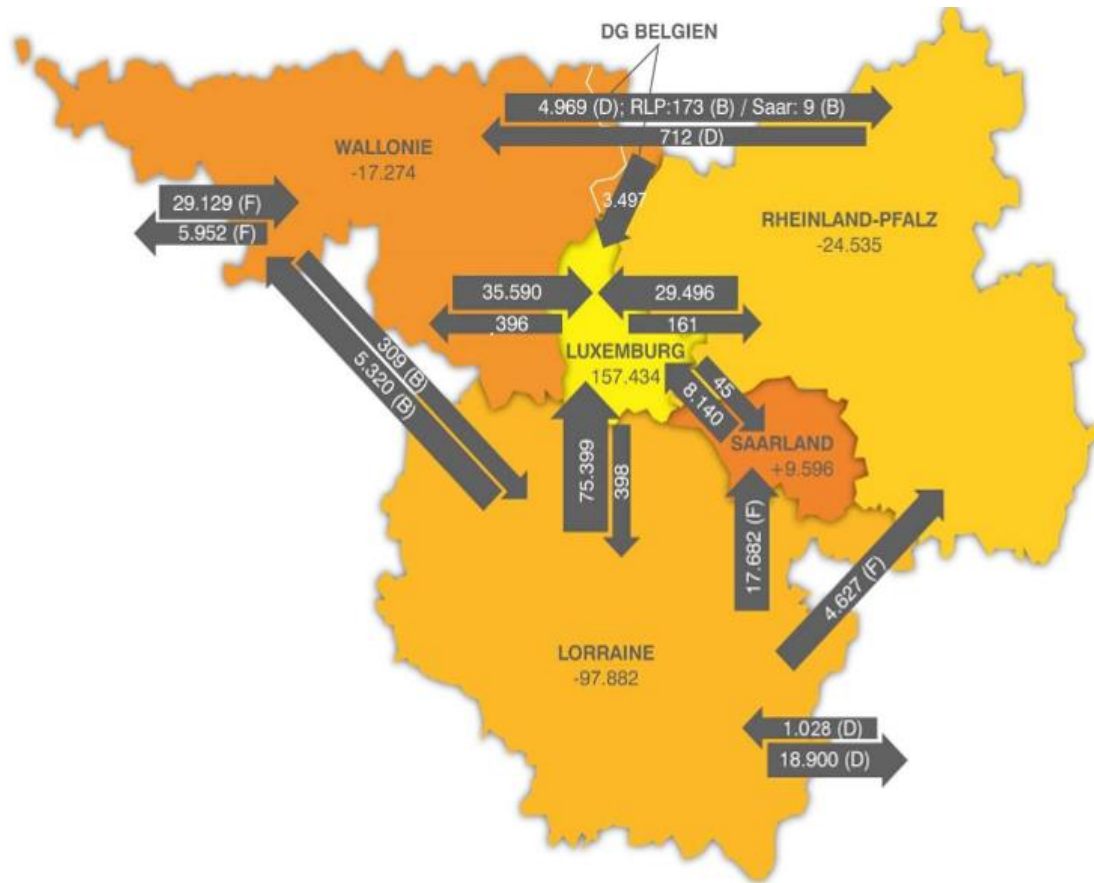
A STRATEGIC POSITION WITHIN THE EU & AT THE HEART OF THE GREATER REGION (1)



THE GREATER REGION: An Excellence Model of European Integration

- Area: 65 401 km² (1,6% of EU27)
- Population: 11,5 millions (2,3% of EU27)
- Located at the centre of the « blue banana », an area with a high concentration of economic wealth
- Share of GDP of the EU : 2,4% (351,8 bn €)
- Employed population: 4,87 millions (2,3% of EU27)
- > 375 000 enterprises
- B2C cross border consumption: more than 3 mia € yearly
- 6 universities: > 200.000 students

A STRATEGIC POSITION WITHIN THE EU & IN THE HEART OF THE GREATER REGION (2)



- **B2C crossborder consumption: more than 3 bn € yearly**
- **1,5 millions of consumers** within a 30 km radius
- Some **213.000 cross-borer workers** in the GR, of which **73% enter Luxembourg** every day
- **Largest trans-border labour market** within the EU (representing 25% of European commuters)

A STRATEGIC POSITION WITHIN THE EU & AT THE HEART OF THE GREATER REGION (3)

Fields of crossborder cooperation within the Greater Region:

- Public transport
- Health and patients mobility
- Vocational training
- Employment
- Town-and-country planning & infrastructures
- Small and medium sized enterprises (SMEs)
- Research and higher education



OPEN ECONOMY



LUXEMBOURG RANKS
3 WORLDWIDE
BEHIND SINGAPORE
AND HONG KONG
(ICC OPEN MARKETS
INDEX 2017)

LUXEMBOURG EXPORTS OVER
80%
OF ITS GOODS
AND SERVICES



EUROPEAN LOGISTICS HUB

LUXEMBOURG
RANKS
LARGEST
CARGO HUB
IN EUROPE

5TH

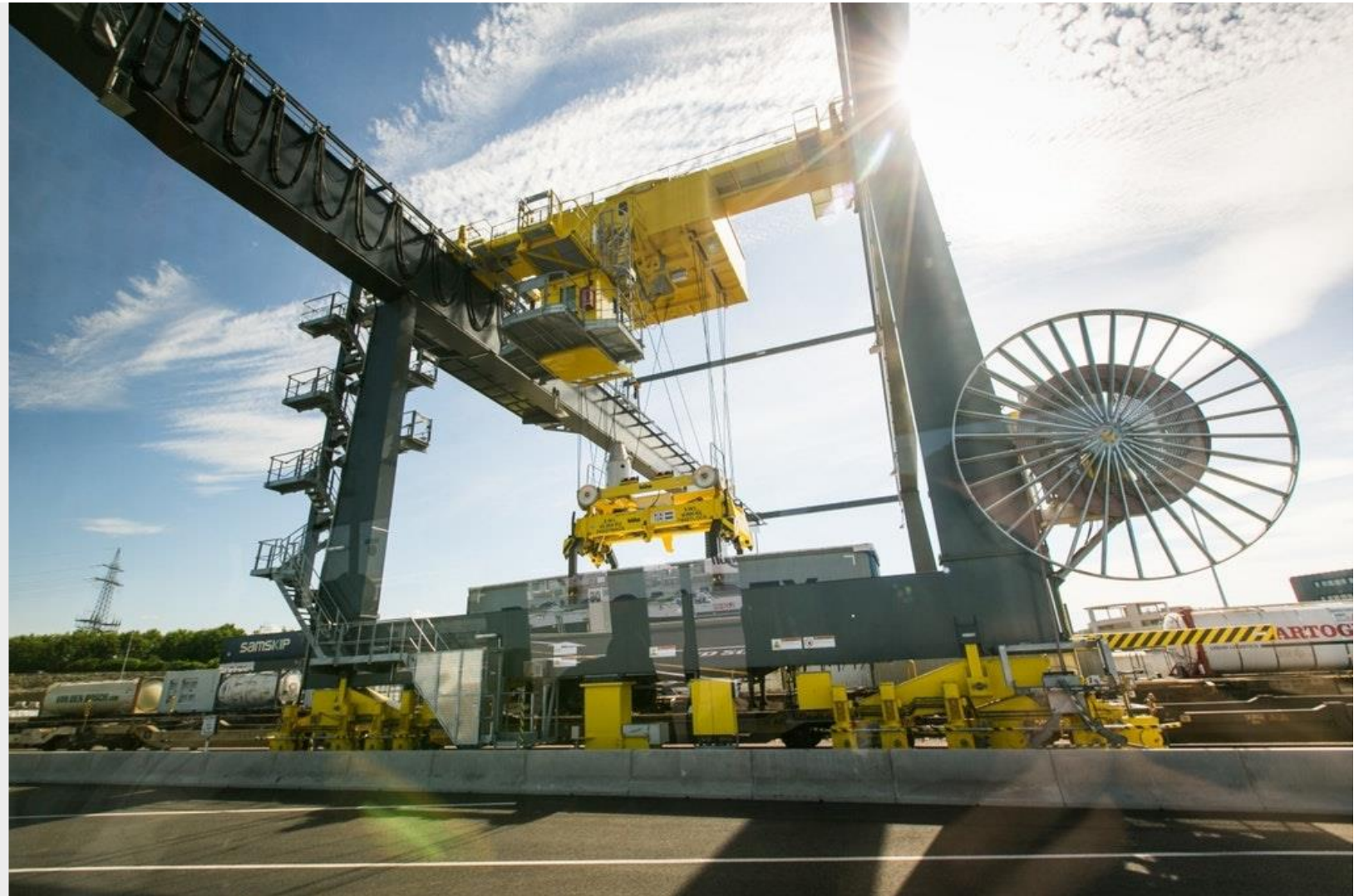


LUXAIR CARGO
12 HOURS
TRAVEL TIME
AWAY FROM



70%

OF EUROPEAN
ECONOMIC
ACTIVITY



DYNAMIC

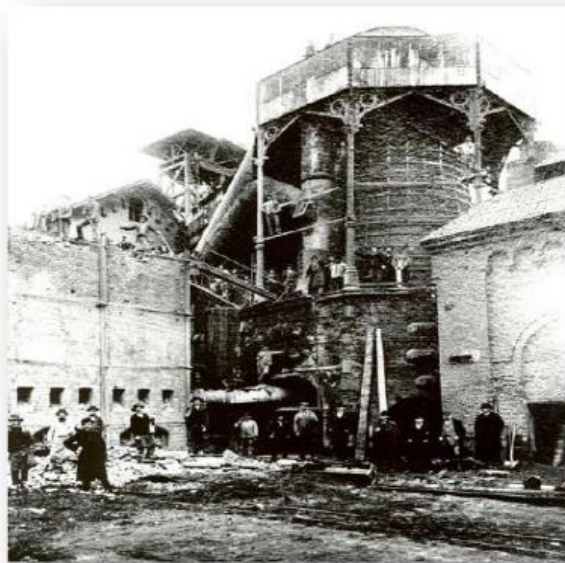
THE GRAND DUCHY OF LUXEMBOURG

LUXEMBOURG SOCIO-ECONOMIC HISTORY & DEVELOPMENT TO START WITH...

A CHANGING LANDSCAPE ...

1839

Agriculture
Emigration



Yesterday...

Who we are

1870

Industrialisation
Steel



Today...

We partner up

1980

Financial
Industry



Tomorrow...

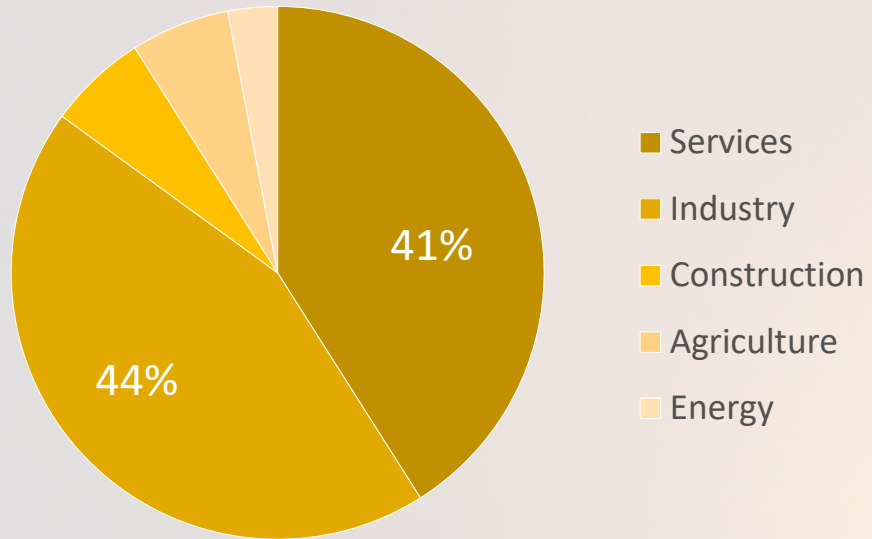
Why Luxembourg?

2000

Connect it all
Hyper-Industrialisation

FROM A LAND OF INDUSTRY...

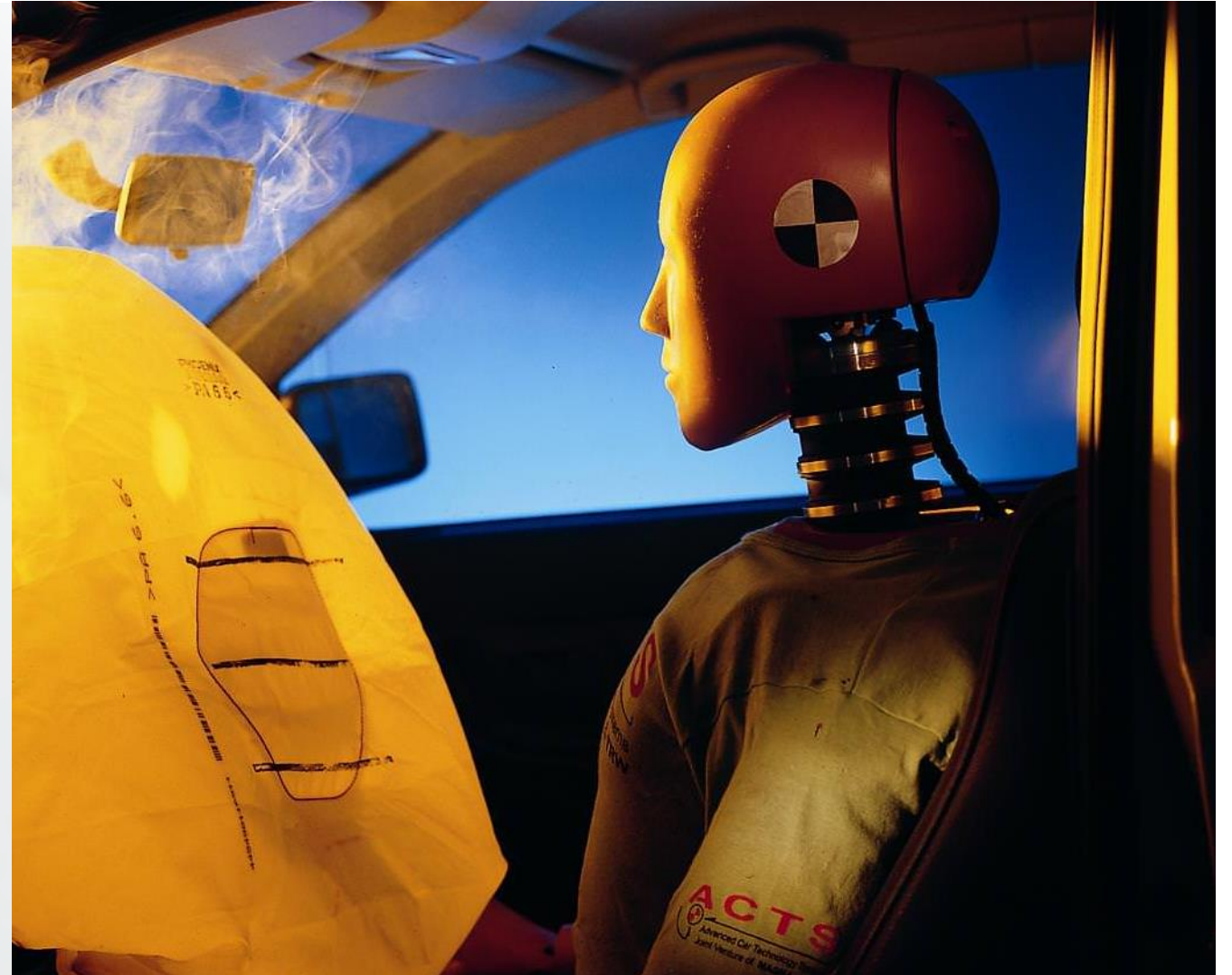
THE ECONOMY IN 1970



TO A LAND OF SERVICES...



A LAND OF INNOVATIVE INDUSTRY



WHERE INNOVATIVE IDEAS TAKE OFF...



THE CITY OF SCIENCES

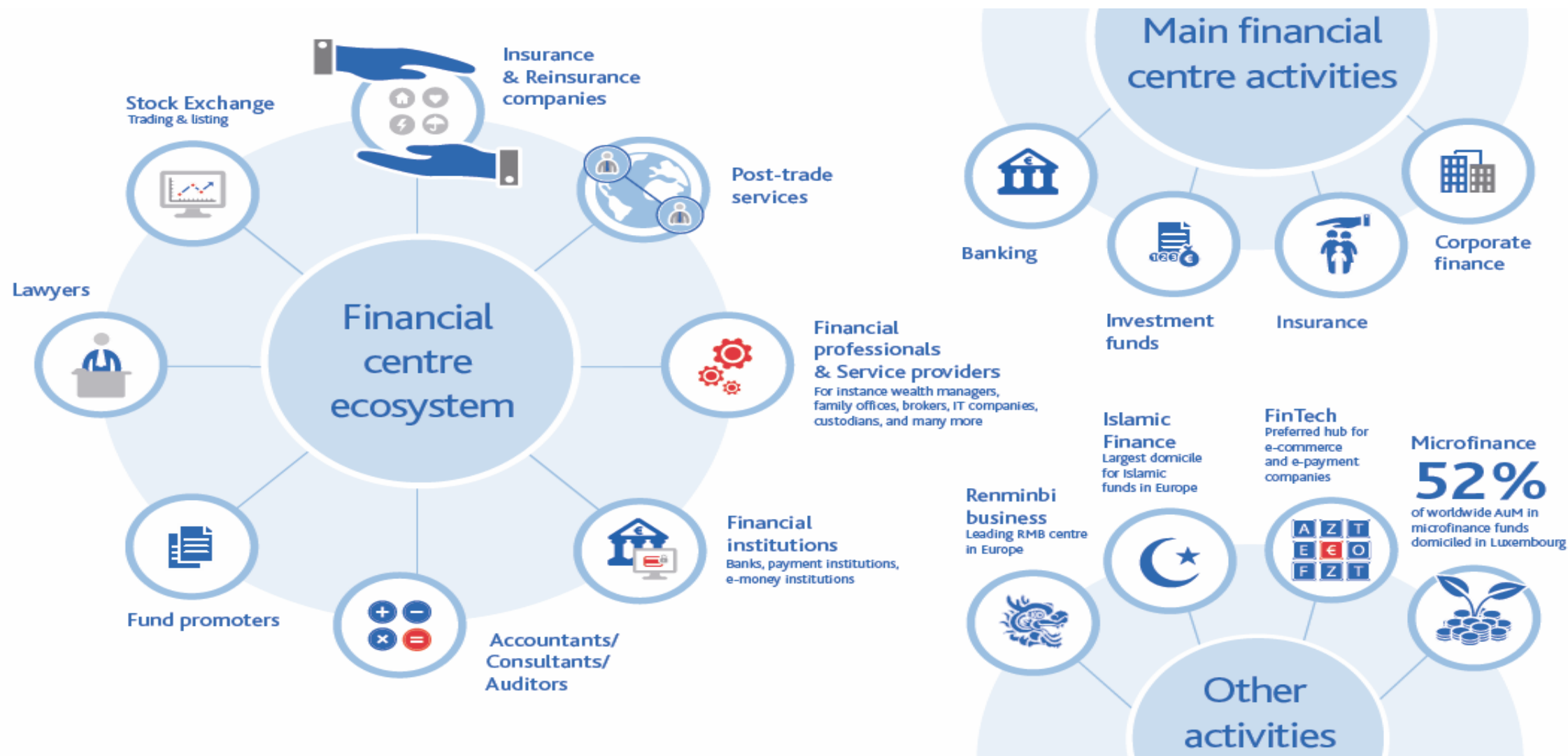


RESEARCH & KNOWLEDGE-BASED ECONOMIC DIVERSIFICATION

INTERNATIONAL FINANCIAL EXPERTISE




GLOBAL EU HUB FOR INTERNATIONAL FINANCE



SPACE MINING & SATELLITE TECHNOLOGY

 **11**
INDUSTRY
CLUSTERS
CREATED SINCE
2002

 **200**
MILLION
EUROS
ALLOCATED
TO SPACE
INDUSTRY
DEVELOPMENT

SES[▲]

- **7,741 channels**
- **1.1 billion people**
- **325 million homes**



spaceresources.lu

Contribute to the peaceful exploration and utilization of space resources for the benefit of humankind.

HIGH QUALITY EDUCATION



THE UNIVERSITY
OF LUXEMBOURG
IS RANKED AMONG
THE WORLD'S TOP
TOP 20
YOUNG UNIVERSITIES



LUXEMBOURG
BOASTS
AROUND 15
INTERNATIONAL
SCHOOLS

RESEARCH AND INNOVATION



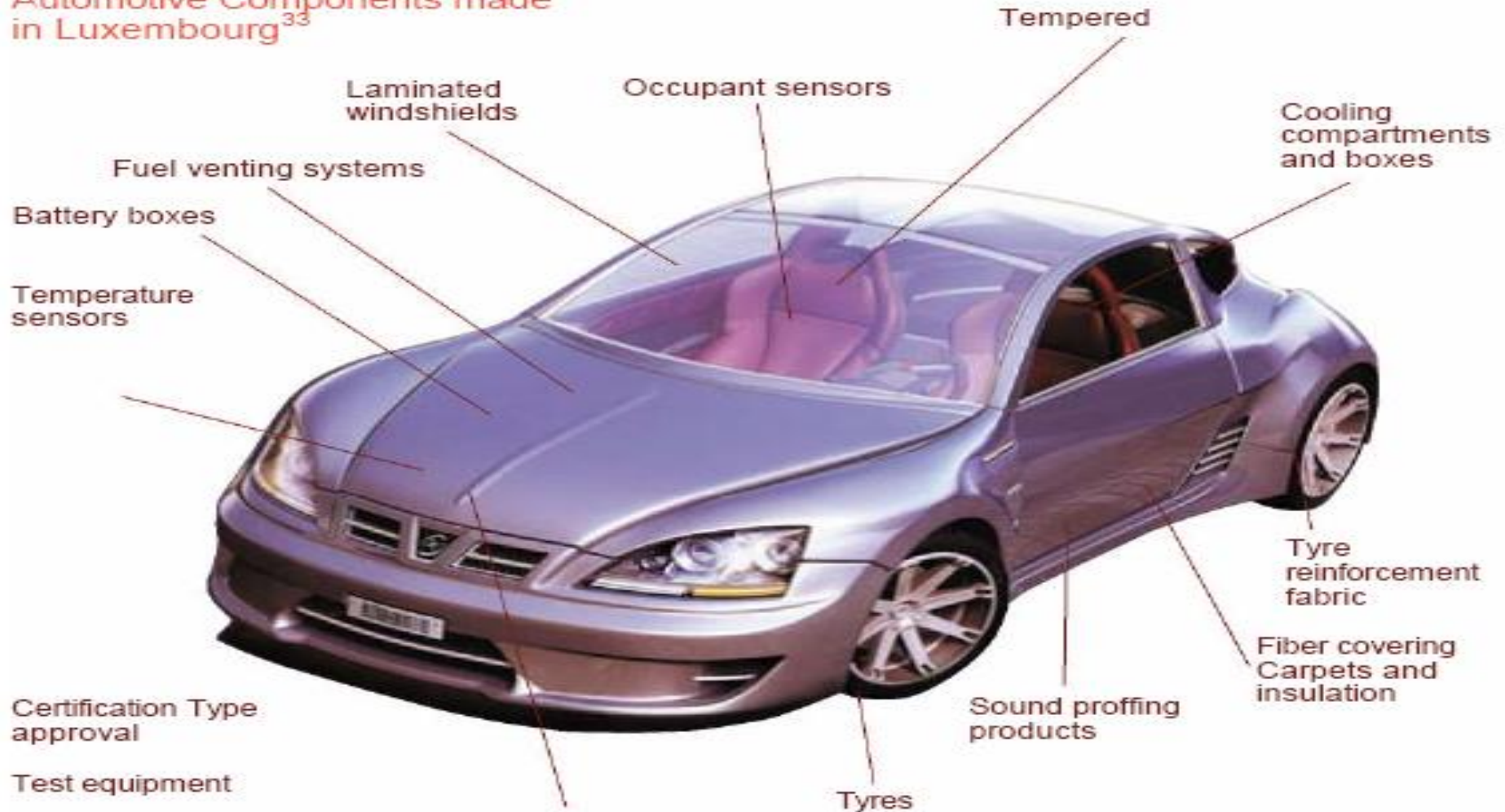
3,000
RESEARCHERS



PUBLIC FUNDING FOR
R&D HAS INCREASED
TENFOLD SINCE 2000

AUTOMOTIVE

Automotive Components made in Luxembourg³³



TIC / DATACENTRES / DIGITALISATION



23 DATA
CENTRES

8 ARE TIER IV
CERTIFIED



23 FIBER
ROUTES
CONNECT LUXEMBOURG
TO THE REST OF EUROPE

HOME FOR STARTUPS AND SMES



663

PROJECTS

FUNDED BY THE MINISTRY
OF THE ECONOMY
BETWEEN 2009 AND 2015

INTRODUCTION OF THE
"ONE-EURO S.À.R.L." IN 2016



THIRD INDUSTRIAL REVOLUTION STRATEGY



319

PEOPLE
PARTICIPATING IN

9

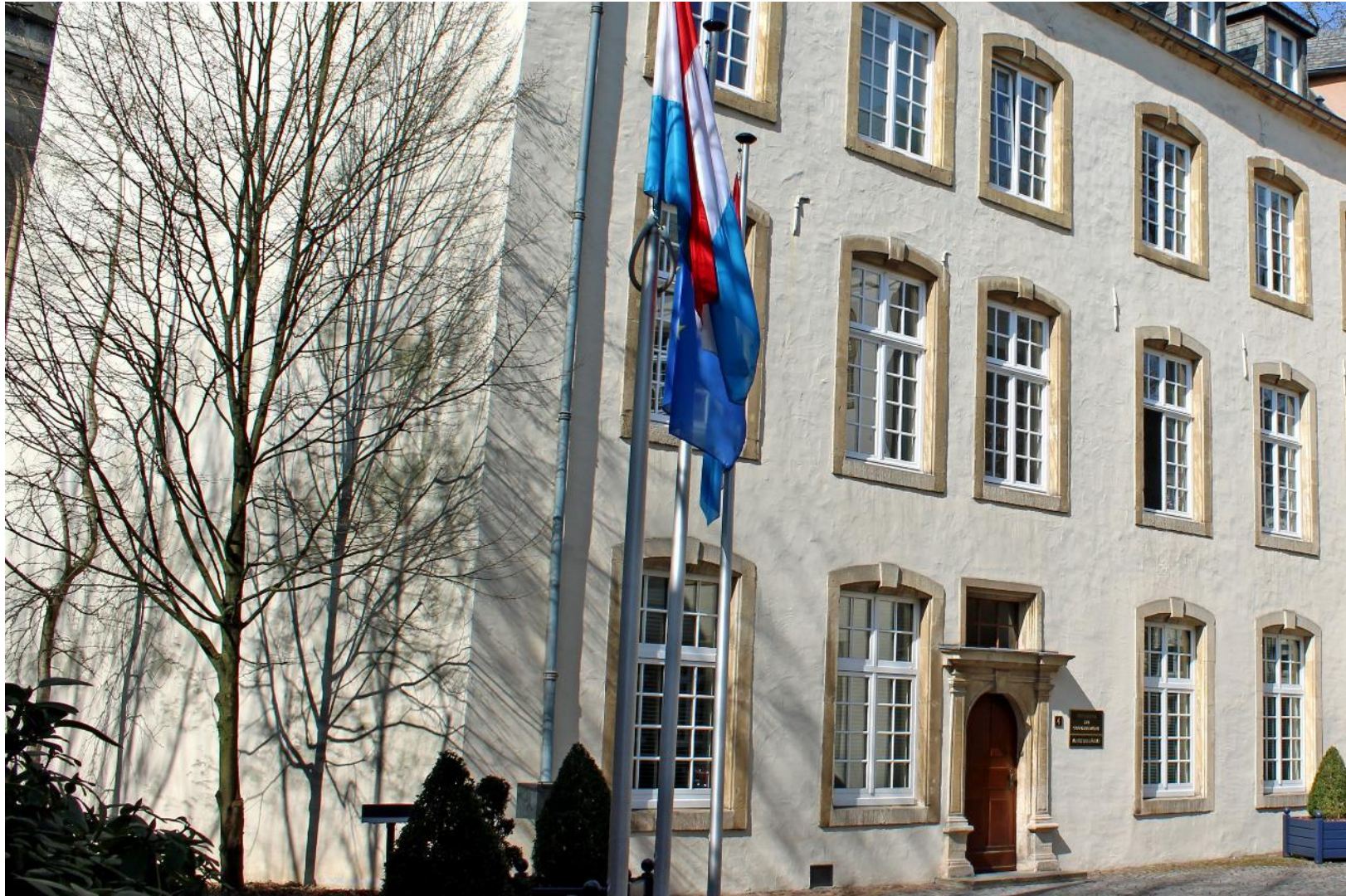
WORKING
GROUPS...



... TO DISCUSS **THE FUTURE
OF LUXEMBOURG**
AND WHAT IT MEANS
FOR THE ECONOMY.
THE ONLY NATIONWIDE STUDY
OF ITS KIND IN THE WORLD.

RELIABLE

STABLE AND POLITICALLY NEUTRAL

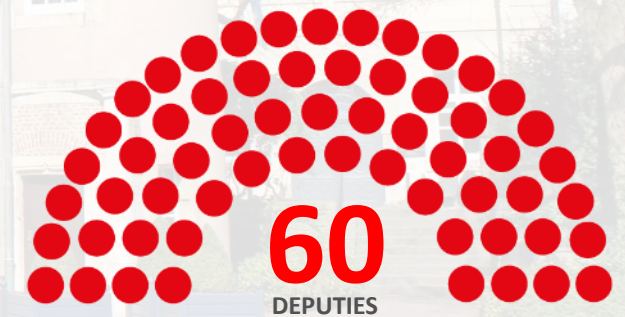


ONLY **PRIME**
8 **MINISTERS**
SINCE 1945



VOTING
RIGHTS
FOR
FOREIGNERS

THE CHAMBER OF DEPUTIES (2017)



ADMINISTRATIVE TASKS MADE EASY



LUXEMBOURG
RANKS **1**
IN EUROPE
(EUROSTAT)



FOR EFFICIENT
AND HELPFUL
ADMINISTRATION

LABOUR LAW AND SOCIAL DIALOGUE



ONLY
4.1
BUSINESS
DAYS LOST
(PER 1,000 WORKERS)



DUE TO STRIKES FROM
2005-2009
(THE EUROPEAN AVERAGE IS 30.6)

HIGH-QUALITY INFRASTRUCTURE



PUBLIC INVESTMENT
REPRESENTS OVER

+4%
FROM OF
GDP

QUALITY OF LIFE AND SAFETY



**LUXEMBOURG IS THE SAFEST
CITY IN THE WORLD**
MERCER QUALITY OF LIVING REPORT 2016

**WHAT DO RESIDENTS OF
LUXEMBOURG CITY SAY?**
EUROBAROMETER 2015

96%
ARE SATISFIED
LIVING IN
LUXEMBOURG

95%
ARE SATISFIED
WITH THE STATE
OF CLEANLINESS

86%
FEEL SAFE

LËTZ TALK BUSINESS!



LUXEMBURGER **WIRTSCHAFTSREISE** 25. - 28. SEPTEMBER 2018
NACH **POLEN** - BRESLAU & OPPELN

ADVENSYS CONSTRUCTIONS S.à r.l.
Herr Ifan ABDUL, CEO & Gründer

AIF Management Services S.A.
Herr Jacek WOLAK, Vorsitzender / Conducting Officer

Bank Julius Baer Europe S.A.
Herr Szymon KALA, Direktor, Relationship Manager

Domaines Vinsmoselle
Herr Yves URY, Kaufmännischer Direktor

CFL Multimodal S.A.
Herr Dr. Imad JENAYEH, Sr. Business Development Manager

Deloitte Luxembourg
Herr Paul POTOCKI, Senior Manager

Invio S. à r.l.
Herr Robert CARTER, CEO

KB | AS Legal
Frau Katarzyna BOZEKOWSKA-ZAWISZA, Partner
Frau Alexandra GRABARSKA

Luxembourg-Poland Chamber of Commerce
Herr Artur SOSNA, Präsident

Yistra
Herr Rosario DI MAGGIO, Geschäftsführer



Who we are

What we do

We partner up

Why Luxembourg?

Thank you!
Danke!
Dziękuję!



LU X EMBOURG
LET'S MAKE IT HAPPEN

**CHAMBRE DE
COMMERCE
LUXEMBOURG**

Chambre de Commerce
7 rue Alcide de Gasperi
L-1615 Luxembourg
Tél : (+352) 42 39 39-1
E-mail : chamcom@cc.lu

www.cc.lu