

CHAMBER OF COMMERCE

OF THE GRAND DUCHY OF LUXEMBOURG



175th 1841-2016
anniversary

The Grand Duchy of Luxembourg:
A Centre of Economic Excellence!

*by Mr Jeannot Erpelding,
Director International Affairs*

THE GRAND DUCHY OF
LUXEMBOURG:

A CENTRE OF ECONOMIC EXCELLENCE

- 
- COUNTRY SNAPSHOT
 - LUXEMBOURG ECONOMY
 - ECONOMY OF THE GREATER REGION
 - MAIN KEY SECTORS

COUNTRY SNAPSHOT



OFFICIAL NAME:

THE GRAND DUCHY OF
LUXEMBOURG

GOVERNMENT:

CONSTITUTIONAL MONARCHY

CAPITAL:

LUXEMBOURG CITY

SURFACE AREA:

2,586 KM²

OFFICIAL LANGUAGES:

FRENCH, GERMAN &
LUXEMBOURGISH
(ENGLISH WIDELY SPOKEN)

CURRENCY:

€URO

TOTAL POPULATION:

576,200



COUNTRY SNAPSHOT

EUROPEAN FROM DAY ONE



FOUNDING MEMBER OF THE EU

ONE OF THREE EU CAPITALS

IN THE CENTER OF EUROPE AND THE EU
SINGLE MARKET

HOME OF MANY EU INSTITUTIONS

COUNTRY SNAPSHOT

EUROPEAN FROM DAY ONE



FOUNDING MEMBER OF THE EU

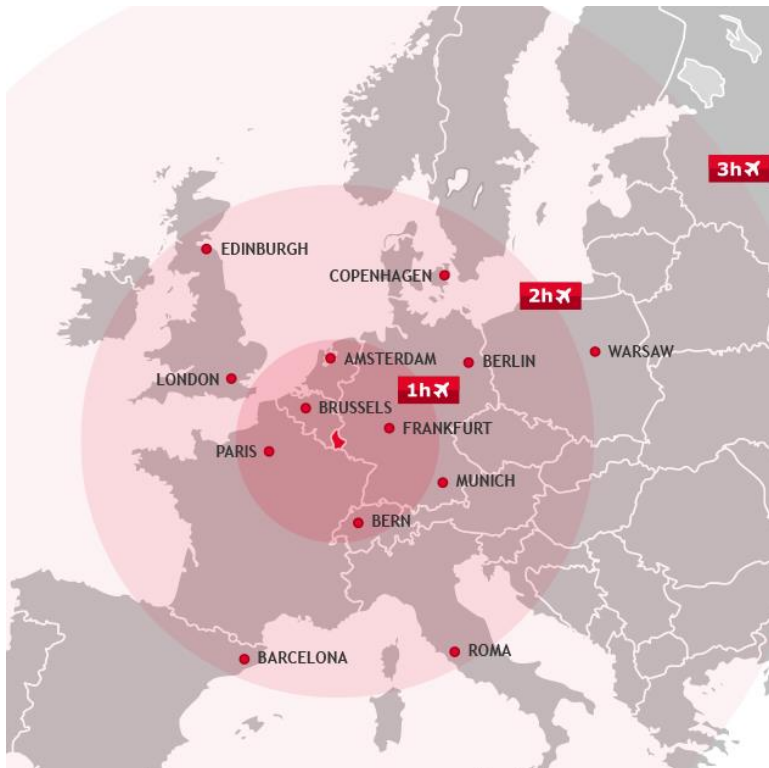
ONE OF THREE EU CAPITALS

IN THE CENTER OF EUROPE AND THE EU
SINGLE MARKET

HOME OF MANY EU INSTITUTIONS

COUNTRY SNAPSHOT

GLOBAL FROM DAY ONE



POLITICAL, ECONOMIC AND SOCIAL
STABILITY (AAA RATED)

GDP GROWTH OF 4,8% IN 2015

LOW PUBLIC DEBT

80% OF NATIONAL PRODUCTION ARE
EXPORTED

1st IN THE WORLD FOR TECH READINESS

COUNTRY SNAPSHOT



AN OPEN AND MULTICULTURAL COUNTRY: Luxembourg, a true European laboratory

- **Direct market access to** France, Germany and Belgium
- **International orientation** of companies: more than **80%** of production and services are **exported**
- **500 million consumers** in the EU
- **Free movement** of **goods**, of **services**, of **persons** and of **capital**
... an everyday reality in Luxembourg



COUNTRY SNAPSHOT



AN INTERNATIONAL BUSINESS ENVIRONMENT

NATIONAL PRODUCTION

80% of the national production (goods and services) is exported

60% of EU GDP in a radius of less than 700km

SERVICES-BASED ECONOMY

80% of all exports are services

CURRENT ACCOUNT

High structural surplus

5.2% of GDP in 2015, mostly due to net exports of financial services

WORKFORCE

71% of total workforce are non nationals

44% of total workforce are cross-border workers from Belgium, France and Germany

UNIVERSITIES AND SCHOOLS

20 European universities and polytechnic schools within a 200 km radius

COUNTRY SNAPSHOT:

3 MOST OPEN ECONOMY IN THE WORLD

	Rank/7 5	Score/ 7
Hong Kong	1	5,5
Singapore	2	5,5
Luxembourg	3	4,9

	Rank/7 5	Score/ 7
Belgium	4	4,8
Germany	19	4,3
France	37	3,9



COUNTRY SNAPSHOT: A CHANGING LANDSCAPE

LUXEMBOURG'S SOCIO-ECONOMIC HISTORY & DEVELOPMENT:

1839

Agriculture
Emigration

1870

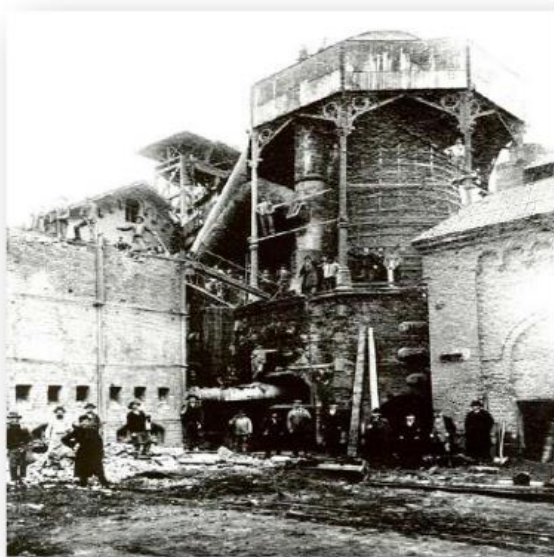
Industrialisation
Steel

1980

Financial
Industry

2000

Connect it all
Hyper-Industrialisation



Yesterday



Today



Tomorrow

THE LUXEMBOURG
ECONOMY:

A CENTRE OF ECONOMIC EXCELLENCE

- COUNTRY SNAPSHOT
- LUXEMBOURG ECONOMY
- ECONOMY OF THE GREATER REGION
- KEY SECTORS OF THE ECONOMY

THE LUXEMBOURG ECONOMY – HELPING INNOVATIVE IDEAS TO TAKE OFF ...

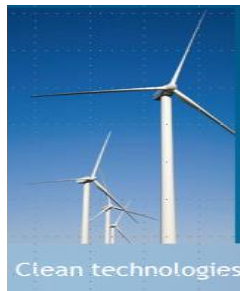


THE LUXEMBOURG ECONOMY – TOWARDS A SMART NATION



THE LUXEMBOURG ECONOMY – TOWARDS A START-UP NATION

**CLEAR AND FOCUSED
DIVERSIFICATION STRATEGY**



**LONG TERM INVESTMENT
IN HIGHER EDUCATION**



THE LUXEMBOURG ECONOMY – TOWARDS A START-UP NATION

INCUBATORS & ACCELERATORS – A GROWING ECO-SYSTEM

technoport®
business incubator | coworking | fab lab

lux future
lab

nyuko

pwc | *PwC's Accelerator*

THE KHUBE
K-Start
THE SPIN-UP OFF PARTNER

House of
BioHealth

neobuild **unc**
LUXEMBOURG INTERNET CULTURE

1535°C
THE BURNING NETWORK
FOR CREATIVE PEOPLE

WISHBOX
coworkingspace | thinkingoutsidethebox

THE LUXEMBOURG ECONOMY –
TRANSITION TOWARDS A SUSTAINABLE AND INTERCONNECTED ECONOMY!



BUILDING A SUSTAINABLE ECONOMY
FOR GENERATIONS TO COME

THE LUXEMBOURG ECONOMY –
TRANSITION TOWARDS A SUSTAINABLE AND INTERCONNECTED ECONOMY!



SMART ECONOMY

Digital for sustainability : smart solutions for a post-carbon economy
Digital & Ethics: Open-source & governance, data protection, privacy, digital preservation

CIRCULAR ECONOMY

Optimisation of resource and material flows system
Resource efficiency – Sharing economy

PROSUMERS & SOCIAL MODEL

LABOUR, TAX AND LEGAL ASPECTS

Impact of the rise of new economic models (lateral power: sharing economy, crowd economy...)
Work organisation, prevalence of the human dimension, social solidarity/cohesion

THE GREATER REGION – A MODEL REGION IN THE EUROPEAN UNION



- COUNTRY SNAPSHOT
- LUXEMBOURG ECONOMY
- **THE GREATER REGION**
- KEY SECTORS OF THE ECONOMY

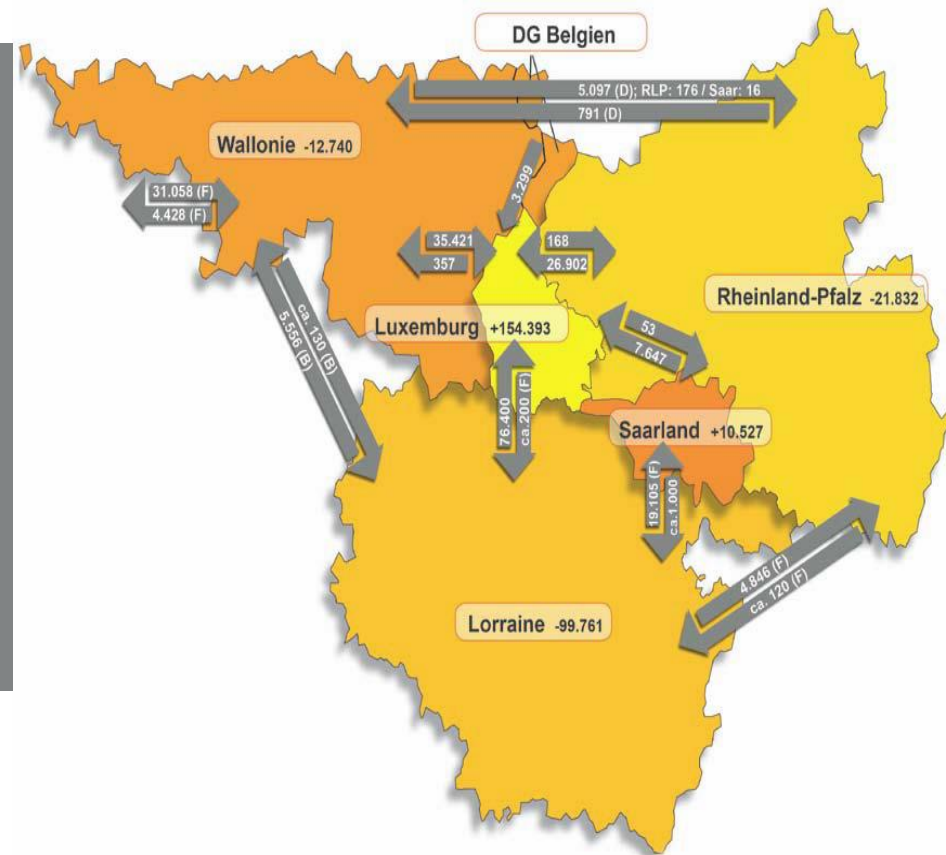
THE GREATER REGION: AN EXCELLENCE MODEL OF EUROPEAN INTEGRATION

- Grand Duchy of Luxembourg, Wallonia, Lorraine, Rhineland-Palatinate, Saarland
- Area: 65,400 km²
- Population: 11.4 million
- Active population: 4.79 million
- Part of Euro zone GDP: 3%
- Over 375,000 companies
- Cross-border consumption B2C: more than EUR 3 billion
- Largest cross-border labour market in the EU (25%)
- with a high concentration of economic wealth



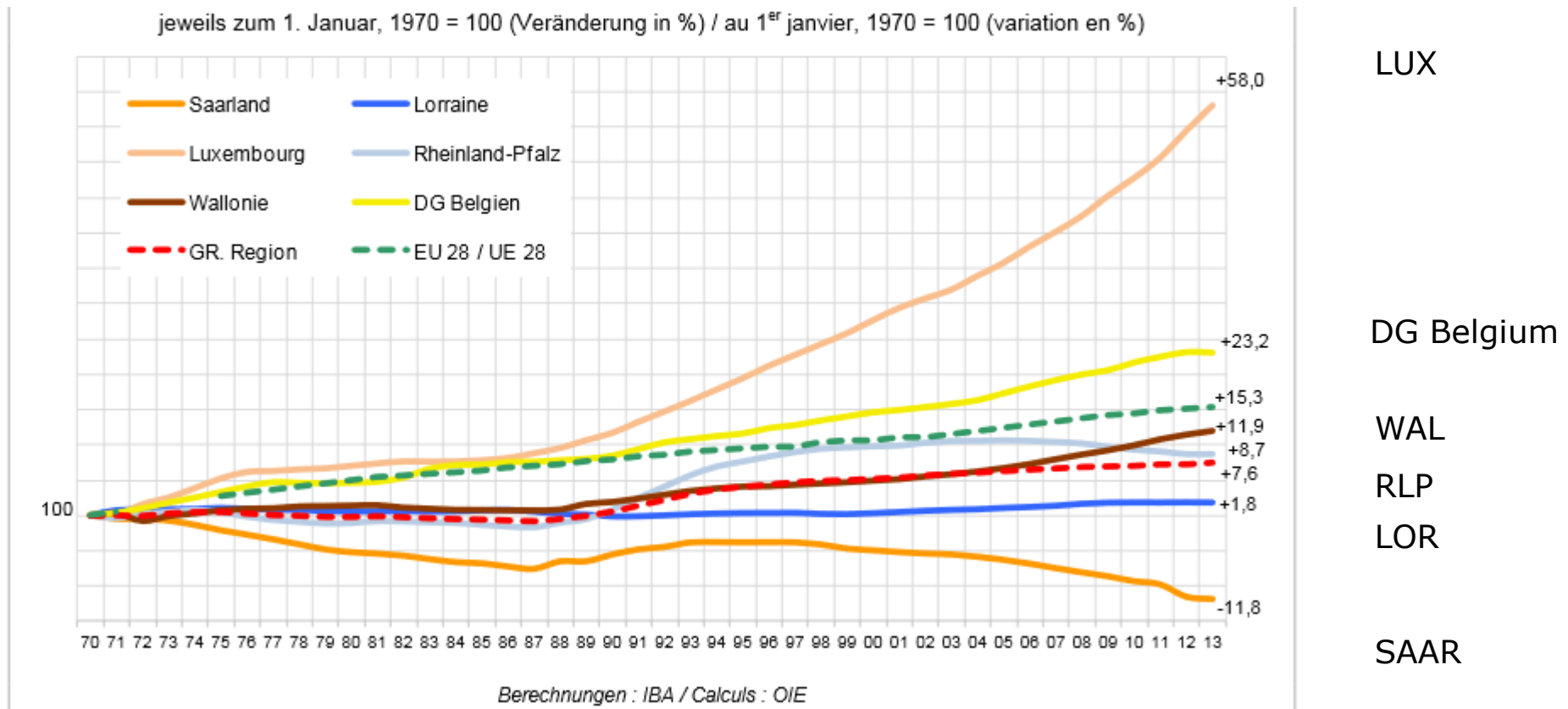
THE GREATER REGION: AREA WITH A HIGH CONCENTRATION OF ECONOMIC HEALTH

- **B2C crossborder consumption:** more than **3 bn € yearly**
- **1,5 millions of consumers** within a 30 km radius
- Some **213.000 cross-border workers** in the GR, of which **73% commuting to Luxembourg** every day
- **Largest trans-border labour market** within the EU (representing 25% of European commuters)



THE GREATER REGION: EVOLUTION OF THE POPULATION

Evolution of the population between 1970 and 2013 (base 100= January 1st 1970)



THE LUXEMBOURG ECONOMY:

A CENTRE OF ECONOMIC EXCELLENCE

- COUNTRY SNAPSHOT
- LUXEMBOURG ECONOMY
- ECONOMY OF THE GREATER REGION
- MAIN KEY SECTORS

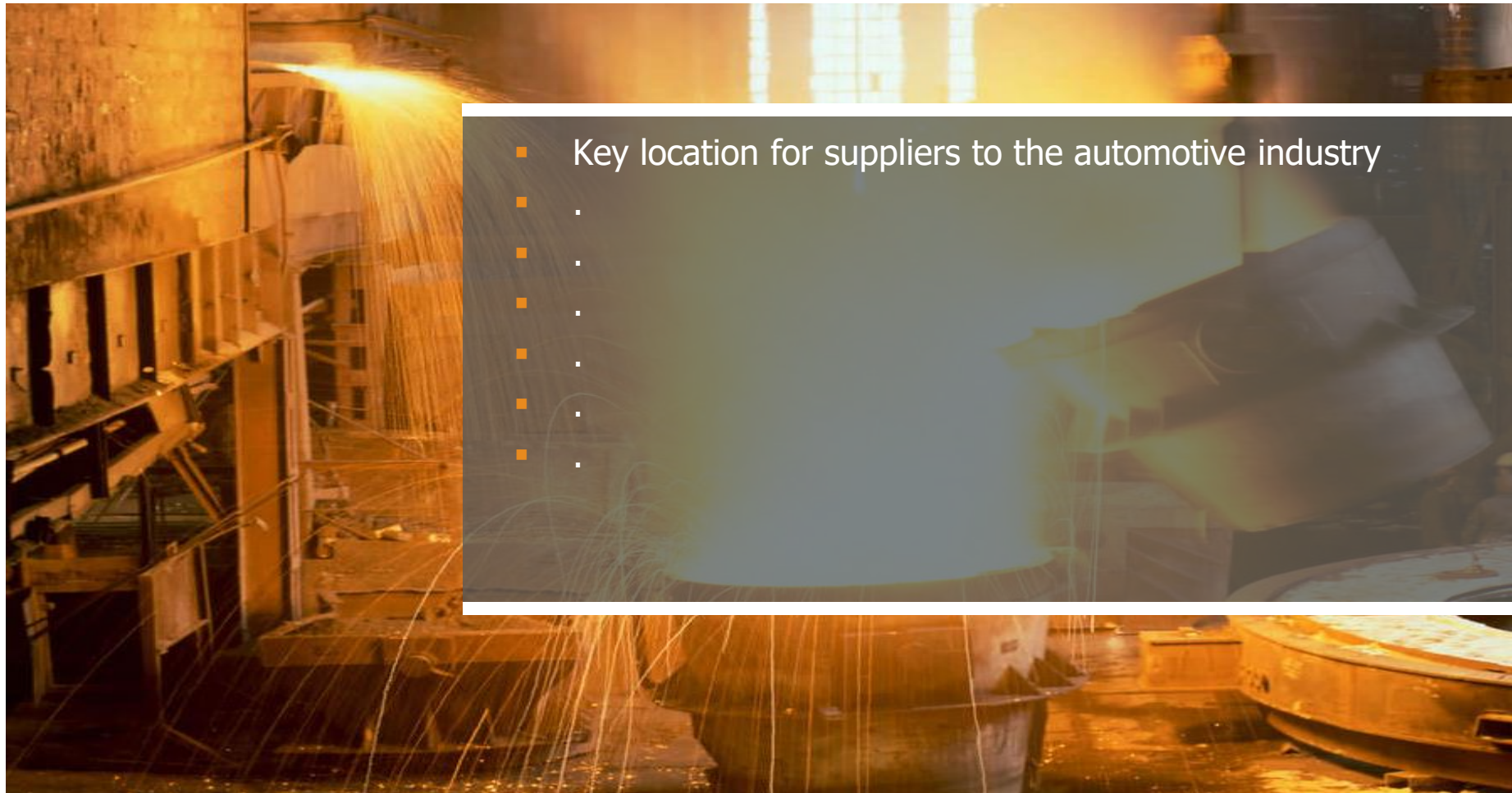
MAIN KEY SECTORS:
SMALL COUNTRY, BIG AMBITIONS!

WITH A WIDE RANGE OF PROMISING SECTORS



- STEEL INDUSTRY
- AUTOMOTIVE
- LOGISTICS AND SHIPPING
- ICT
- SPACE
- ECO-INNOVATION
- HEALTH TECHNOLOGIES
- FINANCIAL SERVICES
- AND SO MUCH MORE...

MAIN KEY SECTORS:
INDUSTRY & CONSTRUCTION



MAIN KEY SECTORS: AUTOMOTIVE INDUSTRY
A PIECE OF LUXEMBOURG IN EVERY CAR WORLDWIDE



- Key location for suppliers to the automotive industry
- Assembly lines supplied from Luxembourg on a same day basis
- Increasing number of products, technologies and services
- R&D and innovation are key with 1 out of 3 employees in this industry being active in this field
- Creation of a whole Ecosystem (automotive cluster, R&D landscape, regulatory framework, etc.)

MAIN KEY SECTORS: ICT, MEDIA, E-COMMERCE
LUXEMBOURG, THE E-GATEWAY TO EUROPE

- 
- State-of-the art connectivity infrastructures and some 20 highly performing and ultra-secured data centres
 - Favourable regulatory framework
 - Consequence : sharp increase of ICT-related jobs in the Luxembourg economy over the past 10 years (OECD)
 - Skype, Paypal, Amazon, as well as gaming firms have all established activities in Luxembourg
 - ICT-related jobs have been created in the financial sector as well (“Fintech”)




Digital
Lëtzebuerg

TURNING LUXEMBOURG INTO A DIGITAL NATION!


MAIN KEY SECTORS: SPACE
WE OCCUPY MORE SPACE IN SPACE THAN ON THE GROUND!



MAIN KEY SECTORS:
LOGISTICS

- 
- At the heart of an excellent communication network
 - 7th largest air cargo hub in Europe
 - Simplified administrative tasks and paperless procedures
 - Multi-modal strategy : rail, road, water, air
 - Developing green and added-value logistics activities
 - Cluster for Logistics & Luxembourg Maritime Cluster

MAIN KEY SECTORS:
HEALTH TECHNOLOGIES

- 
- A high value-added sector we are developing from scratch
 - Focus on personalised medicine and niches (e.g. biomedical samples storage and analysis)
 - Substantial public/private finance and infrastructure
 - Consequence: BioBase, Complix, WaferGen have recently set up their R&D and/or sales activities in Luxembourg
 - The University of Luxembourg is increasingly recognised in the field as well

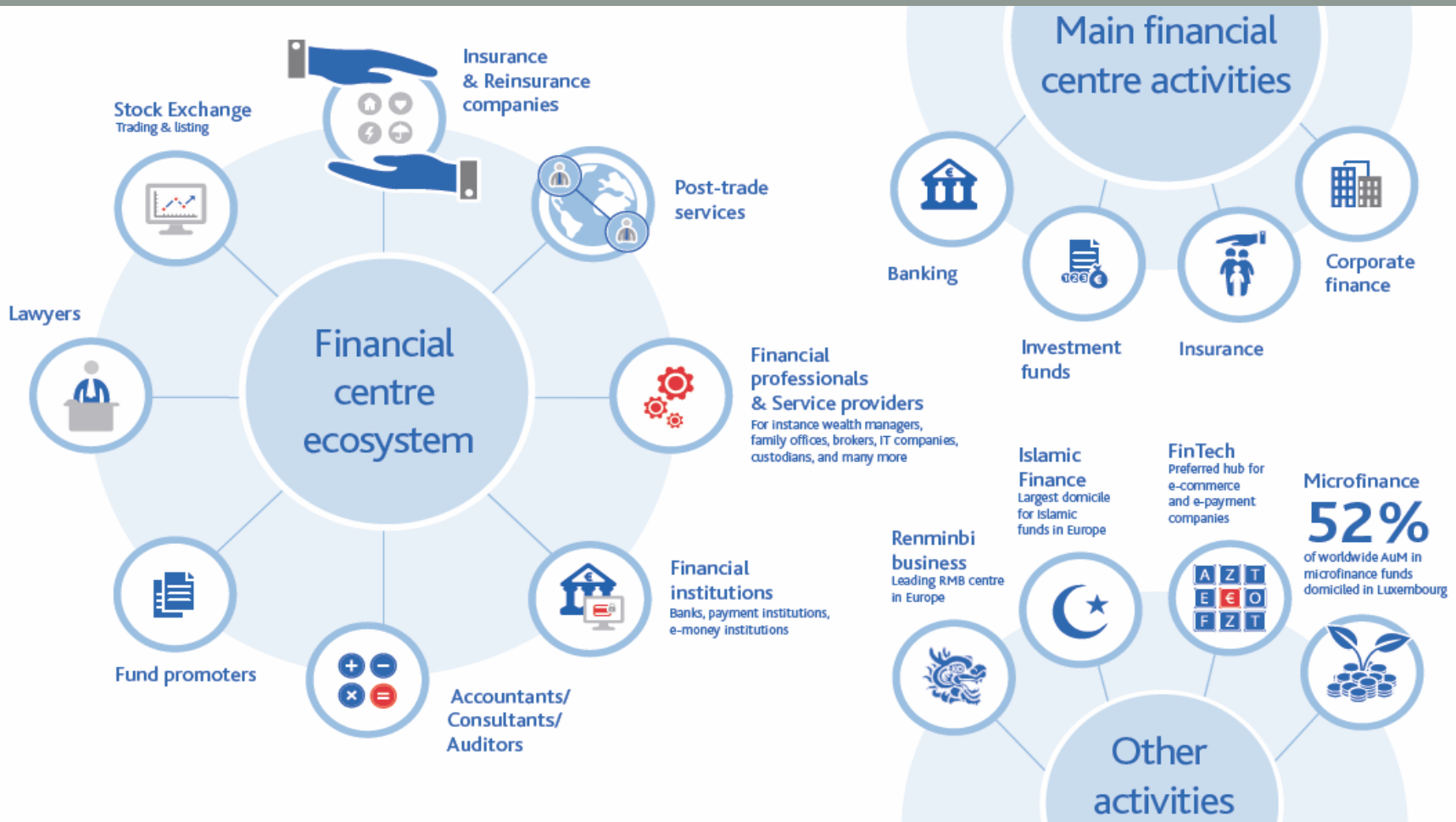
MAIN KEY SECTORS:
ECO-TECHNOLOGIES & RENEWABLE ENERGIES - GREEN AND LEAN

- 
- Renewable materials, efficient use of resources and materials, including waste management and recycling
 - Sustainable water management
 - Sustainable mobility
 - Sustainable agriculture and forestry
 - Industrial biotechnology
 - Environmental engineering such as measurement technology, remediation of contaminated sites, filter technology

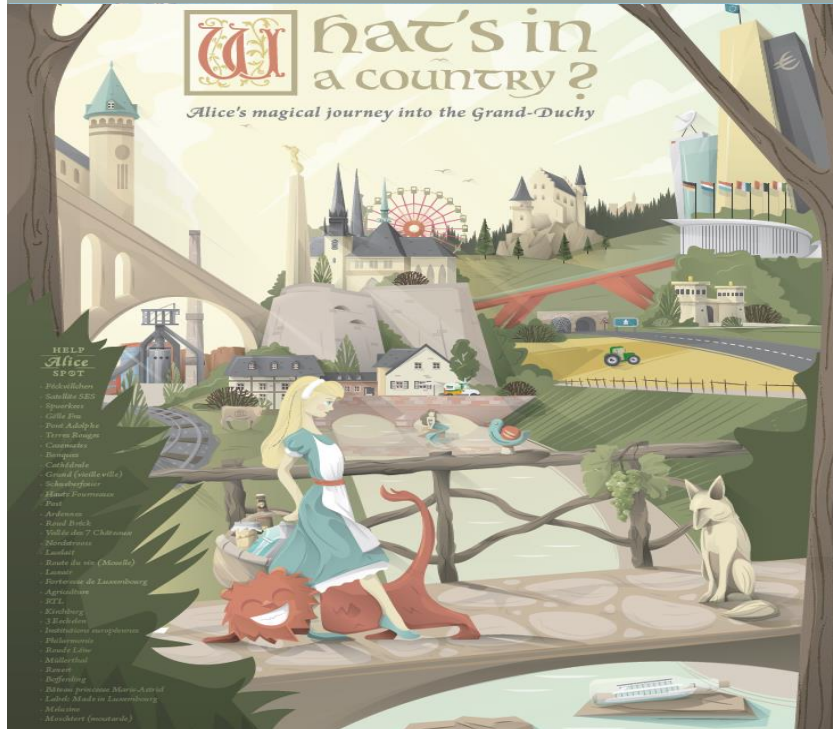
FINANCIAL SECTOR:
GLOBAL EU HUB FOR INTERNATIONAL FINANCE

- 
- A background image featuring a financial line chart with a blue line showing an upward trend, overlaid on a blurred image of a calculator and Euro coins. The chart has a grid and some numerical values like 6,200 and 6,000 are visible.
- 1st private banking centre in the Eurozone
 - 2nd largest fund administration in the world
 - European hub for major e-commerce and e-payment companies
 - Ideal hub for private and institutional investors
 - Ranking a global 12th in the financial centres worldwide and being in 3rd position of the European financial centres
 - LHoFT: Launch of the Luxembourg House of Financial Technology
 - Innovative character and cross border expertise

FINANCIAL SECTOR:
 GLOBAL EU HUB FOR INTERNATIONAL FINANCE



LUXEMBOURG, A MODERN FAIRY TALE -
COME AND VISIT US !



- One of the safest cities in the world
- One of the best country's quality of living
- 3 UNESCO World Heritage Sites
- Moselle wines and sparkling wines (« crémants »)
- World-class dining, fine wine tasting
- Romantic castles, breath-taking landscapes
- Ideal destination for MICE events



LUXEMBOURG,
LET'S TALK BUSINESS!



LUXEMBOURG TRADE MISSION TO FLANDERS
LEUVEN • ANTWERP • NOVEMBER 23 – 25, 2016



YOUR PARTNER FOR SUCCESS

LUXEMBOURG'S NEW SIGNATURE:

WWW.INSPIRINGLUXEMBOURG.LU

LU  EMBOURG

LET'S MAKE IT HAPPEN

LUXEMBOURG TRADE MISSION TO FLANDERS
LEUVEN • ANTWERP • NOVEMBER 23 – 25, 2016



YOUR PARTNER FOR SUCCESS

CHAMBER OF COMMERCE OF THE GRAND DUCHY OF LUXEMBOURG



THANK YOU
FOR YOUR ATTENTION!

www.cc.lu

175th 1841-2016
anniversary