

Why do business in Luxembourg?



www.cc.lu



www.inspiringluxembourg.lu



www.tradeandinvest.lu

DYNAMIC

INTERNATIONAL FINANCIAL EXPERTISE



136
BANKS
(CSSF 2018)



FROM **29**
COUNTRIES

28%
OF GDP

187 FINTECH
COMPANIES



100 NEW FUNDS
EVERY YEAR

47,300
EMPLOYEES
(STATEC 2017)

RELIABLE

TAXATION



Attractive social security contributions allow companies to employ highly skilled workers.

Cyril Marchiol, Tsumé

OPEN

PRO-EUROPEAN / EUROPEAN REGULATORY EXPERTISE



EUROPEAN INSTITUTIONS
ARE HEADQUARTERED
IN LUXEMBOURG

12

DYNAMIC

DIVERSE ECONOMY

10
INDUSTRY
CLUSTERS
CREATED SINCE
2002



200
MILLION
EUROS
ALLOCATED
TO SPACE
INDUSTRY
DEVELOPMENT

RELIABLE

HIGH-QUALITY INFRASTRUCTURE



PUBLIC INVESTMENT
REPRESENTS OVER

+4%
FROM OF GDP

BIO-HEALTH SECTOR
131 BUSINESSES
HALF OF WHICH ARE
LESS THAN
10 YEARS OLD

(Luxinnovation 2018)



There is a real public interest in supporting the film industry in Luxembourg.

Laurent Witz, Zeitt Production

CREATIVE INDUSTRIES

8,000
EMPLOYEES
TURNOVER OF
1 BILLION EUROS



RELIABLE

STABLE AND POLITICALLY NEUTRAL

ONLY
8 PRIME
MINISTERS
SINCE 1945



Luxembourg's neutrality allows us to tap into markets around the globe, even in countries with more complex political environments. The prestige of the Grand Duchy's royal family also carries great weight in certain countries. ”

Arnaud Lambert, Champ Cargosystems

DYNAMIC

TIC / DATACENTRES / DIGITALISATION



23 DATA
CENTRES

8 ARE TIER IV
CERTIFIED



27 FIBRE
ROUTES
CONNECT LUXEMBOURG
TO THE REST OF EUROPE

OPEN

OPEN ECONOMY



LUXEMBOURG
RANKS
3 WORLDWIDE
BEHIND SINGAPORE
AND HONG KONG
(ICC OPEN MARKETS
INDEX 2017)



LUXEMBOURG
EXPORTS NEARLY
65%
OF THEIR GOODS
AND SERVICES



Working in Luxembourg makes a huge difference. In a big country there is a tendency to focus on the national market, but the cross-border expertise available here has been a great help in developing solutions for international applications. ”

David Naramski, Nowina Solutions

RELIABLE

LABOUR LAW AND SOCIAL DIALOGUE

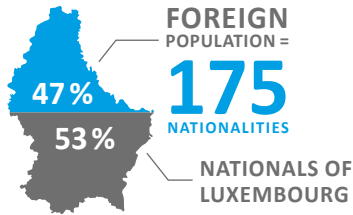
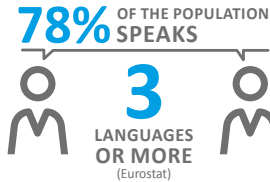


4,1 BUSINESS
DAYS
LOST
DUE TO STRIKES
(PER 1,000 WORKERS)
THE EUROPEAN
AVERAGE IS 30.6

(International Labour Organisation 2009)

OPEN

MULTICULTURAL AND MULTILINGUAL



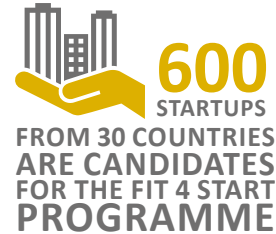
“

37 nationalities work side by side at our locations in Luxembourg, reflecting the diversity of our clients and partners.”

Arnaud Lambert, Champ Cargosystems

DYNAMIC

SUPPORT FOR START-UPS AND SMES



“

Luxembourg is an attractive location for small businesses.”

Sébastien Carcone, NewOne

“

It's easy to get your voice heard by the economic decision-makers, and things get done quickly.”

Guido von Scheffer, Motion-S

RELIABLE

ADMINISTRATIVE TASKS MADE EASY



DYNAMIC

A LAND OF INDUSTRY

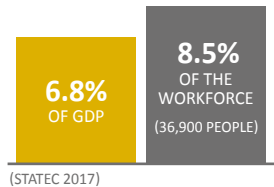
STEEL INDUSTRY ROOTED IN LUXEMBOURG SINCE 1870

ARCELOR MITTAL IS THE FOURTH-LARGEST PRIVATE EMPLOYER WITH



ANNUAL INVESTMENT BY INDUSTRIAL FIRMS: **€430 MILLION** (Eurostat 2016)

INDUSTRY



DYNAMIC

THIRD INDUSTRIAL REVOLUTION STRATEGY

9 WORKING GROUPS...



...TO DISCUSS
THE FUTURE
OF LUXEMBOURG

229 ACTION PLANS,
STRATEGIC POLICIES
AND PROJECTS...

...WERE PROPOSED TO PREPARE
THE COUNTRY, SOCIETY, AND
ECONOMY TO UNDERTAKE THE
"THIRD INDUSTRIAL REVOLUTION"

OPEN

EUROPEAN LOGISTICS HUB

LUXEMBOURG
RANKS **2** OUT OF
160

(Logistics performance index 2016)



75

DESTINATIONS
SERVED BY
LUXEMBOURG
AIRPORT



RELIABLE

QUALITY OF LIFE AND SAFETY



LUXEMBOURG IS THE SAFEST
CITY IN THE WORLD

(Mercer - Quality of Living 2016)

WHAT DO RESIDENTS OF LUXEMBOURG CITY SAY?



(2015 Eurobarometer)

“

*It's a great honour
to see the University
of Luxembourg rank
among the top
24 universities in the
world for social robotics.*”

Dr. Patrice Caire,
Research Associate,
Luxembourg University, SnT

“

*Luxembourg is a European
and international hub thanks
to its strategic location. Goods
can be cleared through airport
customs in just a few hours,
giving us a real competitive edge.*”

Valérie Dubois-Chamérian,
Diversity

DYNAMIC

RESEARCH AND INNOVATION



THE UNIVERSITY
OF LUXEMBOURG
RANKS AMONG
THE WORLD'S
TOP 15
YOUNG UNIVERSITIES
(Times Higher Education)



PUBLIC FUNDING FOR
R&D HAS INCREASED
TENFOLD SINCE 2000



MORE THAN
3,000
RESEARCHERS
(Eurostat 2015)

Chambre de Commerce / 7 rue Alcide de Gasperi, L-1615 Luxembourg

Tel: (+352) 42 39 39-1 / E-mail: chamcom@cc.lu / www.cc.lu

/ May 2019 /